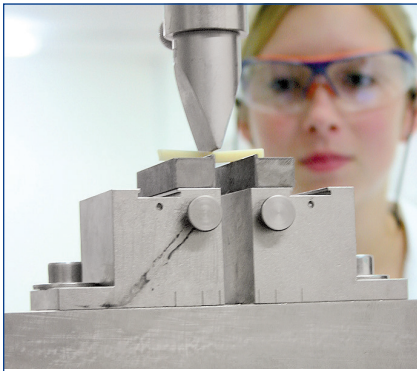




INNOVATION PRECISION EXCELLENCE

DENTAL CATALOG





VOCO – THE DENTALISTS

For more than 35 years German based VOCO has been one of the leading global manufacturers of dental materials.

With our intensive research and development efforts in the fields of composites, adhesives and other materials, we continue to set new standards in the creation of innovative dental products and application aids to provide better solutions to dentists throughout the world.

VOCO researchers are in close contact with more than 150 universities and research institutes worldwide and has been leading several research projects co-sponsored by the German Federal Ministry of Research. VOCO has acted as a technological forerunner in several areas. A leader in nano-technology, our products have received high praise and recognition here in the United States with 4 and 5 star ratings from The Dental Advisor, Reality and other independent institutes.

As a global company VOCO exports to over 100 countries on 6 continents. In the United States we are proud to offer our products through Patterson Dental Inc. and Henry Schein, Inc. Both of these fine distributors provide one day delivery to most cities in the U.S. In Canada VOCO is proud to offer our products through Patterson Dental Canada, Henry Schein Canada, Sinclair Dental Co. Ltd., K-Dental Inc., and Central Dental Solution.

We are proud to offer you ... Great Products ... Great Quality ... Great Support and Great Value.

For detailed information or to place an order, please contact your VOCO Service Team at:

1-888-658-2584

Very truly yours,

VOCO – The Dentalists

**Innovation
Precision
Excellence**

Made in Germany

PREVENTIVE CARE

Protective Dental Care / Desensitizer

Remin Pro	5
Admira Protect	5

Fluoride Varnish

voco Profluorid Varnish	6
voco Profluorid L	7
Bifluorid 5	7

Sealant

Grandio Seal	8
--------------	---

DIRECT RESTORATION

Liner/Etchant

Calcicur	9
Calcimol	10
Calcimol LC	10
Ionoseal	11
Vococid	11

Total-Etch Adhesive

Solobond Plus	12
Admira Bond	12

Self-Etch Adhesive

Futurabond NR	13
Futurabond M	13
Futurabond DC	14
Futurabond M+	14
Futurabond U	15

Nano-Hybrid Composite

GrandioSO	17
GrandioSO Heavy Flow	18
GrandioSO Flow	19
Grandio	20
Amaris	21
Amaris Gingiva	22

NANO-ORMOCER®

Admira Fusion	23
Admira Fusion Flow	24
Admira Fusion x-tra	25
Admira Fusion x-base	26

Bulk-Fill Composite

x-tra fil	27
x-tra base	28

Pediatric Restorative

Twinky Star	29
-------------	----

Caps Warmer / Curing Light

Caps Warmer	30
Celalux 3	30

Polishers / Interdental Wedges

Dimanto	31
Curvy	31

Reinforcement Strands

GrandTEC	32
----------	----

Glass Ionomer Restorative

IonoStar Plus	34
IonoStar Molar	34
Ionolux	35
GIC Mixer	35

Glaze

Final Varnish LC	36
Easy Glaze	36

INDIRECT RESTORATION

VPS Impression Materials

V-Posil Heavy Soft Fast/V-Posil Putty Fast	37
V-Posil Light Fast/V-Posil X-Light Fast	
V-Posil Mono Fast	38
V-Posil Adhesive	39
VOCO Dynamic Dispenser	39

Bite Registration

Registrado X-tra	40
Registrado Clear	40

CAD/CAM Blocks

Grandio blocs	41
---------------	----

Composite Inlay System

GrandioSO Inlay System	42
------------------------	----

Temporary Filling

Clip	43
Clip Flow	43

Temporary Cement

Provicol	44
Provicol QM Plus	44
Bifix Temp	45

Temporary C & B

Structur 3	46
Structur Premium	47
Structur 2 SC	48

Post and Core

Grandio Core Dual Cure	50
Rebilda Form	50
Rebilda DC	51
Rebilda Post	52
Rebilda Post GT	53

Implant Pick-Up System

Quick Up	54
----------	----

Permanent Cement

Bifix QM	55
Bifix SE	56
Meron/Meron Plus	57

Direct Denture Relining

Ufi Gel SC	58
Ufi Gel hard C	59

Control Silicone

Fit Test C & B	60
----------------	----

DIGITAL TECHNOLOGY

3D Printers

SolFlex 650	61
SolFlex 350	61
SolFlex 170	62
V-Print Material	63

OTHERS

Cleaning Agent / Custom Trays

Traypurol tabs	64
Individuo Lux	64
Profibase	64

Devices & Disposables

Devices & Disposables	65/66/67
-----------------------	----------

Preventive Care

Fluoridation · Desensitization						
Page	fluoridation	desensitization	ppm fluoride	presentation	flavor	
5	Remin Pro	•	1,450 ppm	tube	mint, melon, strawberry	
5	Admira Protect	•		SingleDose, bottle	neutral	
6	Profluorid Varnish	•	22,600 ppm	SingleDose, tube	mint, melon, caramel, cherry, bubble gum	
7	Profluorid L	•	22,600 ppm	SingleDose, bottle	neutral	
7	Bifluorid 5	•	11,300 ppm	SingleDose, bottle	clinical	

Fissure sealing			
Page	% w/w	opaque	clear
8	70	•	

Remin Pro

Not available
in Canada



**Triple protective dental tooth cream
without the risk of milk protein allergies**

Indications

After whitening
After professional cleaning
Prevention and control of hypersensitivities

Advantages

- Triple protection of fluoride, hydroxyapatite (calcium and phosphate) and Xylitol
- Hydroxyapatite restores the mineral balance
- 61% more fluoride (1,450 ppm) than the leading brand
- Contains Xylitol which has cariostatic properties
- No risk of milk protein allergies as with other brands
- Fast acting and great tasting
- Easy to apply with a finger, soft toothbrush or in a tray
- CDT Insurance Code 9910 can be used as an application for desensitizing medicament¹



Presentation

REF 2003	12 × 40 g tube melon
REF 2004	12 × 40 g tube mint
REF 2005	12 × 40 g tube strawberry
REF 2006	12 × 40 g tube (4 each × melon, mint, strawberry)
REF 2007	3 × 40 g tube (1 each × melon, mint, strawberry)

Admira Protect



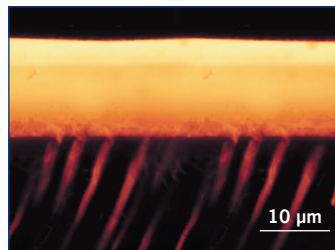
Light-curing, Nano-filled desensitizer

Indications

Treatment of hypersensitive dentin
Treatment of cervical areas (including crown margins, after tooth cleaning or tartar removal, exposed cervical areas etc.)

Advantages

- No hypersensitivity for up to two years
- Biocompatible ORMOCER® matrix – no glutaraldehyde
- Significant reduction of stimulus transfer through intensive deep sealing of exposed root dentin
- High wear resistance through special nano filler technology
- High bond strength
- CDT Insurance Code 9911 can be used as an application of desensitizing resin for cervical and/root surface, per tooth¹



Homogeneous covering of dentin with Admira Protect. The bright areas indicate infiltration into the tubules. Admira Protect CLSM study (PD Dr. T. Pioch), Confocal laser scanning microphotography (CLSM) of Admira Protect on unetched dentin. Photo courtesy of PD Dr. T. Pioch, University Hospital, Heidelberg.

Presentation

REF 1651	pack 50 × 0.06 ml <i>SingleDose</i> , 50 Micro Tim
REF 1652	pack 200 × 0.06 ml <i>SingleDose</i> , 200 Micro Tim
REF 1650	pack 4.5 ml bottle
REF 2249	micro tim - 100 pack

¹ Patti DiGangi, RDH, BS Current Dental Terminology©2017/American Dental Association. All rights reserved.



Easy, tasteful and transparent 5% Sodium Fluoride Varnish

Indications

Treatment of hypersensitive teeth

Sealing the dentinal tubules for cavity preparations or on sensitive root surfaces

Cavity liner under amalgam restorations

Advantages

- Easy non-messy *SingleDose* delivery system
- Tooth-shaded color without yellow discoloration of teeth
- In five flavors without the unpleasant aftertaste of some other brands
- Adheres well to moist surface and sets quickly in seconds after contact with saliva
- High immediate fluoride release to relieve hypersensitivity
- Enhanced flow characteristics allow Profluorid Varnish to reach areas traditional varnishes may miss
- Contains Xylitol
- Does not contain, tree nuts, peanuts, corn, shellfish, eggs, milk protein, soy, gluten, triclosan, petroleum, red dye/artificial coloring, saccharin or aspartame
- CDT Insurance Code 1206 can be used for topical application of fluoride varnish¹
- CPT Insurance Code 99188 for medical claims



Presentation			
REF 2225	48 <i>SingleDose</i> (0.4 ml adults) assorted, accessories		
REF 1268	50 <i>SingleDose</i> (0.25 ml kids) melon, accessories		
Flavor	<i>SingleDose</i> 50 × 0.4 ml	<i>SingleDose</i> 200 × 0.4 ml	tube 10 ml
melon	REF 1269	REF 1271	REF 1267
caramel	REF 2226	REF 2229	REF 2232
cherry	REF 2227	REF 2230	REF 2233
mint	REF 2228	REF 2231	REF 2234
bubble gum	REF 2238	REF 2239	

¹ Patti DiGangi, RDH, BS Current Dental Terminology©2017/American Dental Association. All rights reserved.



Clear 5% Sodium Fluoride Liquid Varnish – especially formulated not to interfere with bleaching procedures

Indications

Treatment of hypersensitive teeth

Sealing of the dentinal tubules for cavity preparations or on sensitive root surfaces

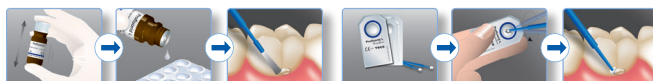
Cavity liner under amalgam restorations

Desensitizer before and after bleaching

Advantages

- Profluorid L synthetic resin matrix ensures effective desensitizing during bleaching without interfering with the bleaching results. Your patients will feel immediate relief which makes Profluorid L the product of choice for each bleaching session.
- Thin and clear for perfect esthetics
- Liquid consistency for easy and economical application
- Effective double protection of 5% sodium fluoride and calcium deposits. The sodium fluoride works immediately while the calcium deposits store and release fluoride over time. The perfect formula for immediate and long term results.
- Free of glutaraldehyde, gluten or methacrylates
- CDT Insurance Code 9910 can be used as an application for desensitizing medicament¹

SingleDose



Presentation

- | | |
|----------|--|
| REF 1590 | 50 <i>SingleDose</i> , accessories |
| REF 1591 | 200 <i>SingleDose</i> , accessories |
| REF 1592 | pack 1 x 4 g bottle, easy brushes, accessories |
| REF 2245 | easy brushes - 50 pack |



Clear Liquid Varnish with Sodium- and Calcium Fluoride – formulated not to interfere with bleaching procedures

Indications

Treatment of hypersensitivity including:

- cervical area and crown margin sensitivity
- after professional cleaning and calculus removal
- tooth surfaces after preparation and/or grinding
- worn occlusal surfaces and teeth carrying clasps
- after injury of the enamel (e.g. fractures, chips)
- sealing cavity margins after restoration, especially after the etching technique has been employed
- as a dentin protection/lining under amalgam fillings
- after bleaching

Advantages

- Bifluorid 5's synthetic resin matrix ensures effective desensitizing during bleaching without interfering with the bleaching results. Your patients will feel immediate relief which makes Bifluorid 5 the product of choice for each bleaching session.
- Thin and clear for perfect esthetics
- Liquid consistency for easy and economical application

Presentation

- | | |
|----------|--|
| REF 1330 | Bifluorid 5, 50 <i>SingleDose</i> |
| REF 1331 | Bifluorid 5, 200 <i>SingleDose</i> |
| REF 1333 | Bifluorid 5 bottle 10 g |
| REF 1335 | Bifluorid 5 set 4 g, 10 ml Solvent |
| REF 1336 | Bifluorid 5 giant pack 3 x 10 g, 10 ml Solvent |
| REF 1032 | Solvent bottle 10 ml |

¹ Patti DiGangi, RDH, BS Current Dental Terminology©2017/American Dental Association. All rights reserved.

Grandio Seal



Highly filled Nano-hybrid pit and fissure sealant

Indications

Seals / fills pits and fissures
Seals damaged enamel surfaces
Covers caries prone areas during orthodontic treatments
Seals deciduous teeth

Advantages

- 70% filled by weight for excellent wear resistance
- Low shrinkage
- Superb flow and wetting properties
- Patented NDT^{®1} (Non-Dripping Technology) Syringes and ultra-fine placement cannulas
- Drip-free, bubble-free placement
- Excellent penetration of the deepest pits and fissures
- One radiopaque shade for optimum visibility
- CDT Insurance Code 1351 can be used as a per tooth sealant to prevent decay²

Technical Data

Adhesion to enamel (after 24 hours of storage in water)	16.9 MPa
Transverse strength	130 MPa
Transverse strength after thermocycling	107 MPa
Wear (ACTA)	41.7 µm
Filler content	70.2% by weight

Presentation

REF 1060	Kit 5 x 2 g syringes with intraoral tips type 45, 5 ml Vococid
REF 1061	refill 2 x 2 g syringes, intraoral tips type 45
REF 2147	intraoral tips type 45 – 100 pack

¹US Patent No: 8,641,416 B2 ² Patti DiGangi, RDH, BS Current Dental Terminology[®]2017/American Dental Association. All rights reserved.

Calcicur®

Ready-to-use calcium hydroxide paste

Indications

Indirect capping for the treatment of caries profunda
Direct capping when the pulp is opened or a pulpotomy is performed
Lining of cavities to prevent exposure to acid media when using cements
For temporary filling of root canals

Advantages

- Suitable for use under any lining or restorative material
- Immediately ready for use
- Antimicrobial effect due to high pH value (12.5)
- Calcium hydroxide content of 45%
- Radiopacity
- Promotes the formation of tertiary dentin
- Effective pulp protection

Presentation

REF 1093 syringe 2.5 g, intraoral tips type 47
REF 2131 intraoral tips type 47 - 30 pack

Calcimol



Self-cured paste to paste calcium hydroxide

Indications

Indirect pulp capping
Lining under all filling materials

Advantages

- Effective protection of the pulp
- Easy application
- Suitable working time
- Short setting time
- Contains 26% calcium hydroxide
- Radiopaque
- Supports the formation of tertiary dentin

Presentation

REF 1097 base 13 g, catalyst 11 g

Calcimol LC



Light-cured, resin modified calcium ion releasing calcium hydroxide paste

Indications

Indirect pulp capping
Lining under all filling materials
Protection when applying the total-etch technique

Advantages

- Calcium ion release promotes hydroxyapatite and tertiary dentin growth
- High pH level (9.5–11) supports healing and has an antimicrobial effect
- Flow on demand – stays where you apply it
- Non-Dripping syringe for easy placement without waste
- Virtually eliminates sensitivities by creating a sealed barrier to the pulp
- Suited for pulp capping* and as a base liner under all restorative materials and cements
- High compressive strength for a solid foundation
- Radiopaque for easy x-ray identification
- Acid resistant

Calcimol LC in the NDT^{®1} syringe

- NDT^{®1} means Non-Dripping Technology
- Especially for fine-flowing materials
- Can be dosed and applied precisely
- No loss or waste of material

Presentation

REF 1307 syringes 2 × 2.5 g, intraoral tips type 41
REF 2146 intraoral tips type 41 - 100 pack

*only for indirect pulp capping

¹US Patent No: 8,641,416 B2



One component light-cured resin reinforced glass ionomer liner

Indications

Lining under all types of filling material
 Extended fissure sealing
 Restoration of small lesions

Advantages

- Saves time: Ready-to-use one component material
- Fast 20 sec. light-cure (2 mm)
- High compressive strength (226 MPa)
- Acid resistant allows for total-etch bonding technique
- Patented NDT^{®1} Syringe saves material
- High fluoride release protects against secondary caries
- High biocompatibility
- Radiopaque

Presentation

REF 1326 pack 3 × 2.5 g syringes, intraoral tips type 41
 REF 2146 intraoral tips type 41 - 100 pack

¹US Patent No: 8,641,416 B2



Phosphoric etchant gel

Indications

Etching of enamel and dentin in the etch-bond technique

Advantages

- Non-dripping gel consistency
- 35% orthophosphoric acid
- Blue color for visual control

Presentation

REF 1224 pack 5 × 2 ml syringes Vococid etchant gel
 REF 2132 intraoral tips type 48 - 50 pack

Solobond Plus



Light-cured universal dentin/enamel adhesive

Indications

Direct restoration with composite restoratives for all cavity classes

Adhesive luting of crowns, bridges, inlays, onlays and veneers with resin cement

For light-, self- and dual-curing composites

Advantages

- “Stick immediately effect” for convenient composite application
- Can be used with or without dentin etching
- Primer and Adhesive are moisture tolerant for application of wet-bonding technique
- Durable restoration through CTR-adhesion, equally high dentin adhesion with or without total-etch technique
- Solobond Plus remains elastic and ensures lasting marginal tightness

**ALSO FOR CHEMICAL
AND DUAL-CURED
RESTORATIVES**

Technical Data

Bonding strength to:		
- enamel (bovine)		24.2 MPa
- dentin* (total etch)		31.0 MPa
- dentin* (no etching)		27.9 MPa

Presentation

REF 1044 set 4 ml primer, 4 ml adhesive, 5 ml Vococid syringe, accessories
REF 1048 refill 4 ml primer
REF 1049 refill 4 ml adhesive

Admira Bond



Light-cured total-etch, one coat; one bottle adhesive

Advantages

- Acetone based for better water displacement; deeper tubule infiltration and reduced sensitivity
- Unique combination of micro mechanical and chemical bonding for superior high bond strength to dentin and enamel
- Elasticity during peak stress ensures long-lasting marginal seal
- Low uniform film thickness
- 10 year proven success record
- Easy dispensing one-drop bottles

CTR adhesion describes the adhesion mechanisms of VOCO dentin and enamel bonding agents

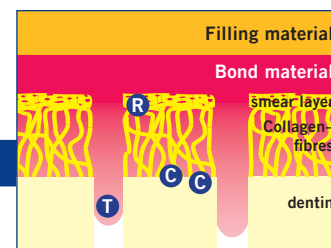
CTR stands for:

C = chemical bond through complex formation to dentinal calcium

C = a second chemical adhesion mechanism through a special monomer to chemically bound phosphate

T = development of tags in the tubuli

R = retentive adhesion to free collagen fibers



Presentation

REF 2479 pack 4 ml bottle
REF 2432 pack 2 x 4 ml bottles



Nano-reinforced single step self-etch adhesive in a *SingleDose* or bottle delivery system

Indications

Light-cured, self-etch adhesive for direct restorations with light-cured filling materials for all cavity Classes

Advantages

- Over 30 MPa adhesion to dentin and enamel
- No post-operative sensitivities (The Dental Advisor)
- Reinforced with nano particles
 - increased bonding values
 - increased marginal integrity
- Fast and easy one-coat application (apply, dry, cure in 35 sec.)
- Moisture tolerant
- No refrigeration or shaking necessary
- Contains fluoride

Technical Data		
Application time		20 sec.
Drying time		5 sec.
Curing time		10 sec.
Bonding strength to	– enamel – dentin	31.4 MPa 30.6 MPa
Cavity Stress Test		
Tightness before stress	– enamel – dentin	100 % 99 %
Tightness after stress*	– enamel – dentin	100 % 97 %

*stress 3,000 cycles of masticatory load of 250N

Presentation	
REF 1152	pack 50 × 0.1 ml <i>SingleDose</i> , accessories
REF 1153	pack 200 × 0.1 ml <i>SingleDose</i> , accessories
REF 1148	set 4 ml Liquid A, 4 ml Liquid B
REF 2247	single tim – 100 pack



One component Nano-reinforced self-etch bond in a bottle delivery system

Indications

Light-cured, self-etch adhesive for use with light-cured restoratives in all cavity Classes

Advantages

- Excellent adhesion to dentin and enamel
- Easy and fast application – one-coat, one-cure technique
- Moisture tolerant
- Excellent wetting properties
- No shaking, no rubbing
- Working time up to 5 minutes

Presentation	
REF 1350	bottle 5 ml, accessories
REF 1351	bottles 3 × 5 ml
REF 2247	single tim – 100 pack



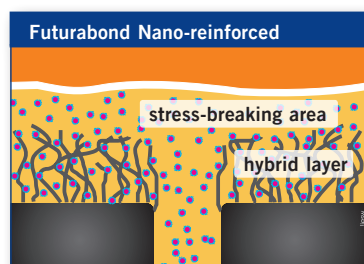
Self-etch, dual-cured adhesive for all light-, dual- and self-cured resin materials

Indications

Dual-cured, self-etch adhesive for direct and indirect restorations with self-, light- and dual-cured resin materials

Advantages

- Over 30 MPa adhesion to dentin and enamel with LC composites and strong bond strength with DC and SC composites
- Virtually no post-operative sensitivities
- Can be used without light – great for endo
- Reinforced with nano particles – increased bonding values – increased marginal integrity
- Fast and easy one-coat application (apply, dry, cure in 35 sec.)
- Moisture tolerant
- No refrigeration or shaking necessary
- Contains fluoride



Presentation

REF 1164	pack 50 x 0.1 ml <i>SingleDose</i> , accessories
REF 1165	pack 200 x 0.1 ml <i>SingleDose</i> , accessories
REF 1163	set 4 ml liquid 1, 4 ml liquid 2, accessories
REF 2246	endo tim (for use in root canal) – 50 pack
REF 2247	single tim – 100 pack



Universal adhesive in a bottle delivery system

Indications

Direct and indirect restorations using any light-cured methacrylate-based restorative, core build-up or luting composite

Intraoral repair of fillings, ceramic veneers and all-ceramic restorations without an additional primer

Treatment of hypersensitive tooth necks

Protective varnish for glass ionomer cement restorations

Sealing of cavities prior to amalgam restorations or prior to temporary luting

In combination with Futurabond M+ DCA (Dual Cure Activator):

Direct and indirect restorations using any self-cured or dual-cured methacrylate-based restorative, core build-up or luting composite

Luting of root posts with dual-curing or self-curing luting composites

Advantages

A flexible and reliable solution for every bonding situation

- Can be applied with or without phosphoric acid etchant
- Suitable for direct and indirect restorations
- Secure adhesion to various materials such as metals, zirconium or aluminium oxide, as well as silicate ceramics, without additional primer
- Applied in one layer - only 35 seconds total working time

Presentation

REF 1515	bottle 5 ml, accessories
REF 1516	bottle 3 x 5 ml
REF 1518	Dual Cure Activator (DCA) bottle 2 ml
REF 2247	single tim – 100 pack

Futurabond U



Dual-cured Universal adhesive

Indications

Direct and indirect restorations using any light-cured, self-cured or dual-cured methacrylate-based restorative, core build-up or luting composite

Intraoral repair of fillings, ceramic veneers and all-ceramic restorations without additional primer

Treatment of hypersensitive tooth necks

Protective varnish for glass ionomer cement restorations

Sealing of cavities prior to amalgam restorations or prior to temporary luting

Luting of root posts with dual-curing or self-curing luting composites



Advantages

- One adhesive for all your adhesive dentistry
 - Self-etch, selective-etch or total-etch
 - For all direct or indirect materials without any extra activator
 - Bonds to all light-, dual- and self-cured resin materials
 - Bonds to metal, zirconia, aluminum oxide, silicate ceramic without any extra primer
- VOCO's patented *SingleDose* System eliminates the solvent evaporation problem that exists with bottle systems. Ensuring reliable and consistent bond strengths with each use
- Fast and easy one-coat application (apply, dry and cure in 35 sec.)
- Virtually no post-operative sensitivity
- Over 30 MPa adhesion to dentin and enamel with LC composites and strong bond strength with DC and SC composites
- Reinforced with nano particles for permanent bond strength

Endo Tim

Indications

Brushes for applying bonding agents and varnishes into the root canal



Presentation

REF 1571	pack 50 × 0.1 ml <i>SingleDose</i> , accessories
REF 1572	pack 200 × 0.1 ml <i>SingleDose</i> , accessories
REF 1574	Trial Kit 20 × 0.1 ml <i>SingleDose</i> , Vococid Gel 2 ml syringe, accessories
REF 2246	endo tim (for use in root canal) – 50 pack
REF 2247	single tim – 100 pack

Restoratives (Light-Cured Restoratives)

Page		cavity class					shades					form of application	material class	filler content [% w/w]		
		I	II	III	IV	V	base / liner	fissure sealing	restoration of deciduous teeth	core build-up	indirect inlays, onlays, veneers				opaque	universal
Composites																
17	GrandioSO	•	•	•	•	•			•	•	3	13	1	syringe, Caps	Nano-hybrid	89
18	GrandioSO Heavy Flow (high viscosity)	•	•	•	•	•	•		•		2	10	1	NDT® syringe, Caps	Nano-hybrid	83
19	GrandioSO Flow (medium viscosity)	•	•	•	•	•	•	•	•		2	10	1	NDT® syringe, Caps	Nano-hybrid	81
20	Grandio	•	•	•	•	•	•	•	•	•	2	13	1	syringe, Caps	Nano-hybrid	87
21	Amaris / Amaris Flow	•	•	•	•	•				•	7		4	syringe, Caps	Nano fine-hybrid	80
22	Amaris Gingiva					•					3	1		syringe	Nano fine-hybrid	80
26	x-tra fil	•	•							•		1		syringe, Caps	multi-hybrid	86
27	x-tra base	• ¹	•	•	•	•	•	•		•		2		NDT® syringe, Caps	multi-hybrid	75
ORMOCER®s																
23	Admira Fusion	•	•	•	•	•			•	•	4	13	1	syringe, Caps	Nano-ORMOCER®	84
24	Admira Fusion Flow				•	•	•				2	9	1	NDT® syringe	Nano-ORMOCER®	74
25	Admira Fusion x-tra	•	•		•	•			•			1		syringe, Caps	Nano-ORMOCER®	84
26	Admira Fusion x-base	• ¹	•	•	•	•	•	•	•			1		NDT® syringe	Nano-ORMOCER®	72
Compomers																
29	Twinky Star	• ³	• ³			• ³			•		8 ²			Caps	compomer	78

¹ small² colored, with glitter effect³ Deciduous Tooth

An overview of our glass ionomer restorative materials can be found on page 33.



Universal light-cured 89% filled Nano-hybrid composite for anterior and posterior fillings of all classes

Indications

Class I - V restorations
 Reconstruction of traumatically damaged anteriors
 Facetting of discolored anteriors
 Correction of shape and shade for improved aesthetic appearance
 Locking, splinting of loosened teeth
 Repairing veneers
 Restoration of deciduous teeth
 Core build-up under crowns
 Composite inlays

Technical Data

Filler Content:	89% by weight 73% by volume	DIN 51081
Shrinkage:	1.61 %	analogous Watts et al.
Surface Hardness (Micro-Vickers hardness)	211 MHV	University of Rostock, Germany
Modulus of Elasticity	16,650 MPa	ISO 4049
Depth of Cure	>2.8 mm/20 s	ISO 4049
Radiopacity	320 % Al	ISO 4049
Resistance to Ambient Light	4'30"	ISO 4049
Gloss	84 GU	DIN 67530
Wear Rate	18 µm	3 body wear (ACTA 200,000)

Advantages

89% fillers by weight:

- Outstanding wear resistance
- Enhanced color stability

30-50% less resin compared to classic hybrid and pseudo nano composites:

- Low shrinkage of only 1.6 vol. %
- Non-sticky
- Prolonged working time under ambient light

Designer Nano particles:

- Excellent polishability and polish retention
- Tooth-like modulus of elasticity
- Tooth-like thermal expansion and flexural strength
- VOCO presents its individual cross contamination prevention packaging for capsules



Presentation

REF 2646 Trial Kit, 8 × 0.25 g Caps (2 × A1, 2 × A2, 2 × A3, 2 × GA3.25)
 1 × 1 g GrandioSO Heavy Flow syringe A2, 1 × Dimanto Polisher
 REF 2640 Caps Kit, 80 × 0.25 g Caps (A1, A2, A3, GA3.25, B1) shade guide
 REF 2600 Syringe Kit, 5 × 4 g syringes (A1, A2, A3, GA3.25, B1) shade guide
 REF 2607 shade guide
 REF 9301 1 Caps Dispenser

shade	1 × 4 g syringe	16 × 0.25 g Caps	shade	1 × 4 g syringe	16 × 0.25 g Caps
A1	REF 2610	REF 2650	D3	REF 2627	REF 2667
A2	REF 2611	REF 2651	I (Incisal)	REF 2629	REF 2669
A3	REF 2612	REF 2652	Opaque OA1	REF 2630	REF 2670
A3.5	REF 2614	REF 2654	Opaque OA2	REF 2631	REF 2671
A4	REF 2615	REF 2655	Opaque OA3.5	REF 2633	REF 2673
B1	REF 2619	REF 2659	BL (Bleach)	REF 2635	REF 2675
B2	REF 2620	REF 2660	GA3.25	REF 2613	REF 2653
B3	REF 2621	REF 2661	GA5	REF 2616	REF 2656
C2	REF 2624	REF 2664			

GrandioSO Heavy Flow



Highly viscous, light-cured, flowable 83% filled Nano-hybrid composite

Indications

Restoration of minimally invasive cavities of all Classes

Restoration of small Class I cavities and for extended fissure sealing

Restoration of Class II – V cavities including wedge-shaped defects and cervical caries

Blocking out of undercuts

Lining or coating of cavities

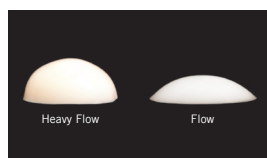
Repair of restorations and veneers

Cementing of attachment of translucent prostheses (e.g. all-ceramic crowns etc.)

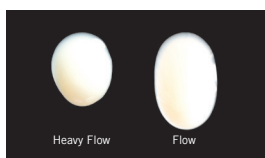
Advantages

- Strong enough for occlusal surfaces of Class I & II restorations
- Superior physical properties through 83% filler content
- Wear resistance of a hybrid
- No undesirable runoff; increased stability in comparison to conventional flowables
- Simplified filling of undercuts, approximal boxes and paragingival areas
- Ideal for proximal and cervical areas
- Ideal for use with the GrandTEC glass fiber system
- Patented NDT^{®1} (Non-Dripping Technology) Syringes

The visible difference



Stability comparison on a horizontal plane



Flowability comparison on a vertical plane

Presentation

REF 2680 set syringe 5 × 2 g (A1, A2, A3, A3.5, WO), shade guide, accessories

REF 2148 intraoral tips type 46 – 100 pack

REF 9301 1 Caps Dispenser

refills (2 × 2 g syringes/16 × 0.25 g Caps), each:

Technical Data

Filler Content	83 % by weight	68 % by volume
Compressive Strength	417 MPa	ISO 9917
Shrinkage	2.96%	analogous, Watts, et al.
Depth of Cure	>2.5 mm/20 sec	ISO 4049
Wear Rate	40 µm	3 body wear (ACTA 200,000)
Flexural Strength	159 MPa	ISO 4049
Flexural Modulus	11,850 MPa	ISO 4049
Radiopacity	260 % AI	ISO 4049

shade	2 × 2 g syringes	16 × 0.25 g Caps	shade	2 × 2 g syringes
A1	REF 2684	REF 2704	C2	REF 2692
A2	REF 2685	REF 2705	Opaque OA2	REF 2693
A3	REF 2686	REF 2706	I (Incisal)	REF 2694
A3.5	REF 2687	REF 2707	BL (Bleach)	REF 2695
A4	REF 2688	REF 2708	WO (White Opaque)	REF 2696
B1	REF 2690	REF 2712	GA5	REF 2689
B2	REF 2691		Grandio®SO shade guide	REF 2607

¹US Patent No: 8,641,416 B2

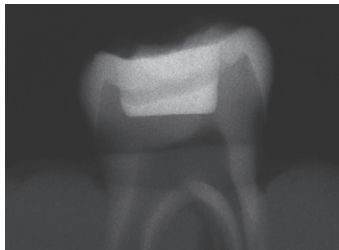


Light-cured, flowable 81% filled Nano-hybrid composite

Indications

Restoration of minimally invasive cavities of all Classes
 Restorations of small Class I cavities and extended fissure sealing
 Restoration of Class II – V cavities including v-shaped defects and cervical caries
 Blocking out of undercuts
 Lining or coating of cavities
 Repair of fillings, veneers and temporary crowns & bridges
 Cementing of attachment of translucent prostheses (e.g. all-ceramic crowns etc.)

For easy diagnostics use White Opaque (WO) with a radiopacity of 500% AI



GrandioSO Flow WO is extremely radiopaque. With a radiopacity of 500% AI it provides a very sharp contrast to the dental hard tissue and other restorative materials. The white-opaque shade also comes in extremely useful for a further physical treatment of a filling. For example, the white material clearly marks the proximity of the pulp when used as a cavity liner. GrandioSO Flow WO is also highly suitable for masking discoloured areas. The use of the shade WO for colour effects in the fabrication of highly esthetic restorations rounds off its special range of applications.

Advantages

- Outstanding physical properties through 81% filler content
 - Strong enough for occlusal surfaces of Class I + II restorations
 - Wear resistance of a hybrid
 - Excellent color retention
- Excellent wettability
- Thixotropic material that will “flow on demand” without slumping
- Precise application with long bendable tip
- Natural esthetics and exact shade matching with Grandio
- Radiopaque
- Patented NDT^{®1} (Non-Dripping Technology) Syringes

Technical Data

Filler content	81 % by weight	65 % by volume
Wear rate	48 µm	(ACTA method: 200,000 cycles)
Flexural strength	159 MPa	ISO 4049
Modulus of Elasticity	10,580 MPa	ISO 4049
Radiopacity	250 % AI	ISO 4049
Radiopacity WO	500 % AI	ISO 4049
Depth of cure	> 2.51 mm / 20 sec. ISO 4049	

Presentation

REF 2720 GrandioSO Flow kit, 5 × 2 g syringes (A1, A2, A3, A3.5, WO)
 REF 2146 intraoral tips type 41 – 100 pack
 REF 9301 1 Caps Dispenser
 refills (2 × 2 g syringes/16 × 0.25 g Caps), each:

shade	2 × 2 g syringe intraoral tips type 41	16 × 0.25 g Caps	shade	2 × 2 g syringe intraoral tips type 41
A1	REF 2722	REF 2742	B2	REF 2730
A2	REF 2723	REF 2743	C2	REF 2732
A3	REF 2724	REF 2744	I (Incisal)	REF 2733
A3.5	REF 2725	REF 2745	Opaque OA2	REF 2734
A4	REF 2726	REF 2746	BL (Bleach)	REF 2736
B1	REF 2729	REF 2749	WO (White Opaque)	REF 2737
			GA5	REF 2727

¹US Patent No: 8,641,416 B2



Universal light-cured 87% filled Nano-hybrid composite for anterior and posterior fillings of all classes

Indications

Class I to V fillings
 Reconstruction of traumatically affected anteriors
 Facetting of discolored anteriors
 Correction of shape and shade to improve esthetic appearance
 Locking, splinting of loose anteriors
 Repair of veneers
 Core build-up under crowns
 Especially suitable for composite inlays

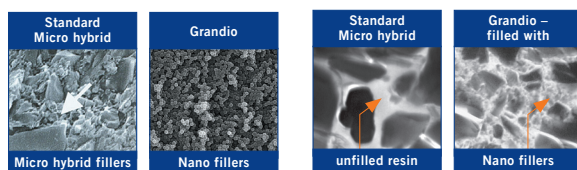
Advantages

87% filled by weight:

- Outstanding wear resistance
- Enhanced color stability
- Terrific handling characteristics (great sculptability, non-sticky consistency, no slumping)

30-50% less resin compared to standard micro hybrids:

- Low shrinkage of only 1.57%*
- Excellent polishability
- Improved translucency
- Very high biocompatibility
- VOCO presents its individual cross contamination prevention packaging for capsules



Presentation

REF 1800 Grandio syringe kit, 5 x 4 g syringes (A1, A2, A3, A3.5, B2), shade guide
 REF 1830 Grandio Caps kit, 50 x 0.25 g Caps (A1, A2, A3, A3.5, B2), shade guide
 REF 1899 Grandio shade guide
 REF 9301 1 Caps Dispenser
 refills (1 x 4 g syringe/20 x 0.25 g Caps), each:

shade	1 x 4 g syringe	20 x 0.25 g Caps	shade	1 x 4 g syringe	20 x 0.25 g Caps
A1	REF 1810	REF 1840	C2	REF 1817	REF 1847
A2	REF 1811	REF 1841	C3	REF 1818	REF 1848
A3	REF 1812	REF 1842	D2	REF 1825	REF 1855
A3.5	REF 1813	REF 1843	D3	REF 1819	REF 1849
A4	REF 1814	REF 1844	I (Incisal)	REF 1820	REF 1850
B1	REF 1824	REF 1854	Opaque OA2	REF 1821	REF 1851
B2	REF 1815	REF 1845	Opaque OA3.5	REF 1822	REF 1852
B3	REF 1816	REF 1846	BL (Bleach)	REF 1823	REF 1853

Technical Data

Filler content	87% by weight 71.4% by vol.	DIN 13922
Shrinkage	1.57% by vol.	University of Manchester, GB
Surface hardness (Micro Vickers-hardness)	285 MHV	University of Rostock, Germany
Wear rate	14 µm	3 body wear (ACTA 200,000)
Depth of cure	3 mm/20 sec.	ISO 4049
Radiopacity	250% Al	ISO 4049



*Source: Prof Dr. Watts, University of Manchester, England, 2002

Amaris



Initial situation



Selecting of opaque shade



Applying opaque layer



Final esthetic restoration

Pictures are a courtesy of Joyce L. Bassett, DDS,
Scottsdale, AZ



Nano-reinforced simplified shade composite

Indications

Esthetic restoration of Class III, IV and V cavities in anteriors

Esthetic restoration of Class I, III and V cavities in posteriors

Reconstruction of traumatically damaged anteriors

Direct and indirect composite veneers, facing of discolored anteriors

Correction of shade and shape for improved esthetics

Repair of highly esthetic ceramic restorations

Splinting, interlocking of teeth

Advantages

- Easy to polish for high luster gloss anterior
- Nano-reinforced pre-polymerized ISO fillers for low shrinkage and excellent wear for posterior
- Non-sticky consistency makes shaping easy
- Non-sensitive to ambient light guarantees at least 8 minutes working time
- Simply intuitive approach: become an artist in less than 10 minutes
- Natural fluorescence and high color stability
- Patented NDT®¹ Syringe technology

Presentation					
REF 1930	Amaris kit, 8 × 4 g syringes (O1, O2, O3, O4, O5, TL, TN, TD), 2 × 1.8 g syringes Amaris Flow (HT, HO), accessories		Filter Degree	80 % by weight	
REF 1950	Amaris Caps kit, 16 × 0.25 g Caps (each O1, O2, O3, O4, O5, TL, TN, TD), 2 × 1.8 g syringes Amaris Flow (HT, HO), accessories		Volumetric Shrinkage	2.0 %	
REF 1949	Amaris Caps starter kit, 4 × 0.25 g Caps (each O1, O2, O3, O4, O5), 2 × 1.8 g syringes Amaris Flow (HT, HO) accessories		ACTA Wear Rate (200,000 cycles)	45 µm	
REF 2144	intraoral tips type 44 – 100 pack		Flexural Strength (ISO 4049)	120 MPa	
REF 1969	shade guide		Compressive Strength	375 MPa	
REF 9301	1 Caps Dispenser		Diametral Tensile Strength (DTS)	51 MPa	
refills (1 × 4 g syringe / 16 × 0.25 g Caps), each:			Radiopacity (ISO 4049)	210 % Al	
			Translucent shades (10 sec.)	> 2.5 mm	
			Opaque shades (40 sec.)	> 2.0 mm	

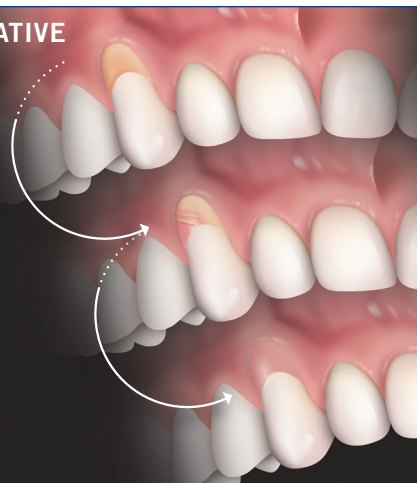
shade	1 × 4 g syringe	16 × 0.25 g Caps	shade	1 × 4 g syringe	16 × 0.25 g Caps
O1	REF 1933	REF 1953	O Bleach	REF 1938	REF 1958
O2	REF 1934	REF 1954	TL (Translucent Light)	REF 1940	REF 1960
O3	REF 1935	REF 1955	TN (Translucent Neutral)	REF 1941	REF 1961
O4	REF 1936	REF 1956	TD (Translucent Dark)	REF 1942	REF 1962
O5	REF 1937	REF 1957			
refills (2 × 1.8 g syringe), each:					
shade	2 × 1.8 g syringe		shade	2 × 1.8 g syringe	
HT (High Translucent)	REF 1945		HO (High Opaque)	REF 1946	

¹US Patent No: 8,641,416 B2

Amaris Gingiva



THE ALTERNATIVE TO SURGERY



Light-cured, gingiva colored restorative system

Indications

Class V restorations (cervical caries, root erosion, V-shaped defects) especially in cases of retreating gingiva e.g. as a result of periodontal disease

Covering of exposed discolored hypersensitive necks of teeth, especially in the visible anterior area

Highly esthetic correction of malpositions of teeth, for direct veneers, facings and corrections of the red-white esthetics

Advantages

- Highly esthetic chairside composite restorative which can be adapted to a large variety of gingiva colors
- One basic color and three mixable opaques can reproduce almost all gingiva colors
- Cervical areas exposed after gingiva recession and cervical V-shaped defects can be restored esthetically and functionally
- Gingiva colors for chairside use
- Advanced composite technique: Amaris® Know-How in gingiva colors for highly esthetic restorations beyond the gingiva margin
- Patented NDT^{®1} Syringe technology

Presentation

- REF 1970 Amaris Gingiva Set, 3 × 1.2 g opaque in the colors white, light and dark, 1 × 4 g basic color "nature", accessories
- REF 1971 Amaris Gingiva refill, 1 × 4 g color "nature"
- REF 2147 intraoral tips type 45 – 100 pack

¹US Patent No: 8,641,416 B2

Admira Fusion



Technical Data

Filler Degree	84.0 % w/w
Shrinkage	1.25 Vol.-%
Shrinkage stress	3.71 MPa analogous
3-Point-flexural strength	132 MPa
Modulus of elasticity	9,800 MPa
Compressive strength	307 MPa analogous
Edge stability	171.9 N
Radiopacity	305 %Al
Resistance to ambient light	198 s
Water uptake	13.4 µg / mm ³
Solubility in water	≤ 0.1 µg / mm ³
Thermal expansion coefficient α	40.3 *10 ⁻⁶ / K
Curing depth	2.71 mm / 20 s
Tensile bond strength on enamel (with Futurabond M+: Self-Etch mode)	30.04 MPa
Tensile bond strength on dentin (with Futurabond M+: Self-Etch mode)	23.82 MPa

Universal Nano-ORMOCER® restorative material

Indications

Class I to V restorations
 Base in Class I and II cavities
 Reconstruction of traumatically damaged anteriors
 Facetting of discolored anteriors
 Correction of shape and shade for improved esthetic appearance
 Locking, splinting of loose anteriors
 Repairing veneers, small enamel defects and temporary C&B materials
 Extended fissure sealing
 Restoration of deciduous teeth
 Core build-up
 Composite inlays

Advantages

- The world's first all ceramic-based direct universal restorative material
- Pure Silicate Technology: Fillers and matrix are based purely on silicon oxide
- No classic monomers for higher biocompatibility (no BISGMA, UDMA, TEGDMA, etc.)
- Nano-ORMOCER® technology reduces shrinkage and shrinkage stress by up to 50 % compared to composites and leads to outstanding shade stability
- Non-sticky consistency for easy handling
- Perfect balance of translucency and opacity for natural looking restorations
- Easy to polish to a high shine luster
- High 84 % fill rate for high wear resistance
- Compatible with all conventional bonding agents
- VOCO presents its individual cross contamination prevention packaging for capsules

Presentation

REF 2750	Syringe Kit, syringe 5 × 3 g (A1, A2, A3, A3.5, Admira Fusion x-tra), shade guide
REF 2752	Shade guide
REF 2780	Caps Kit, Caps 75 × 0.2 g (15 each of A1, A2, A3, A3.5, Admira Fusion x-tra), shade guide
REF 9301	1 Caps Dispenser

shade	1 x 3 g syringe	15 x 0.2 g Caps	shade	1 x 3 g syringe	15 x 0.2 g Caps
A1	REF 2754	REF 2782	Opaque OA1	REF 2770	REF 2798
A2	REF 2755	REF 2783	Opaque OA2	REF 2771	REF 2799
A3	REF 2756	REF 2784	Opaque OA3	REF 2772	REF 2800
A3.5	REF 2758	REF 2786	Opaque OA3.5	REF 2773	REF 2801
A4	REF 2759	REF 2787	BL (Bleach)	REF 2775	REF 2803
B1	REF 2762	REF 2790	I (Incisal)	REF 2776	REF 2804
B2	REF 2763	REF 2791	Mixed*	n/a	REF 2806
B3	REF 2764	REF 2792	GA3.25	REF 2757	REF 2785
C2	REF 2766	REF 2794	GA5	REF 2760	REF 2788
D3	REF 2768	REF 2796			

*3 each of B1, C2, D3, BL, Incisal

Admira Fusion Flow



Technical Data

Filler degree 74.0 % w/w	74.0 % w/w
Compressive strength	281 MPa analogous
Shrinkage	2.75 Vol.-% analogous
Shrinkage stress	7.27 MPa analogous
Radiopacity	240 %Al
Resistance to ambient light	meets standard
Water uptake	12 µg / mm ³
Solubility in water	< 0.1 µg / mm ³
Modulus of elasticity	5,771 MPa
Curing depth	2.66 mm / 20 s
Surface hardness (Micro-Vickers)	86 MHV
Diametrical tensile strength	66 MPa

Flowable light-cured Nano-ORMOCER® direct restorative material

Indications

Filling of small cavities and extended fissure sealing
 Blocking out undercuts
 Lining or coating cavities
 Fillings of Class III-V cavities
 Repairing fillings, veneers and temporary restorations
 Luting translucent prosthetic pieces
 Locking / splinting of loose teeth
 Lining cavities

Advantages

- The world's first all ceramic-based direct flowable restorative material
- Pure Silicate Technology: Fillers and matrix are based purely on silicon oxide
- No classic monomers for higher biocompatibility (no BisGMA, UDMA, HEMA or TEGDMA etc.)
- Nano-ORMOCER® technology reduces shrinkage (2.75 % by volume) and shrinkage stress to the level of universal composites
- Inert for outstanding shade stability
- High fill rate of 74% w/w for better wear
- Compatible with conventional adhesives
- Easy to polish to a high shine luster
- Excellent wettability
- Thixotropic material that will "flow on demand" without slumping
- Non-Dripping Syringe Technology (NDT®)
- Radiopaque (240 % Al)
- 12 shades for esthetic restorations – perfectly matching the shade range of the packable version, Admira Fusion

Presentation

REF 2816 Kit syringe 5 x 2 g (A1, A2, A3, A3.5, WO), shade guide, accessories
 REF 2146 Intraoral tips type 41 – 100 pack

shade	2 x 2 g syringes	shade	2 x 2 g syringes
A1	REF 2818	B2	REF 2825
A2	REF 2819	C2	REF 2826
A3	REF 2820	I (Incisal)	REF 2828
A3.5	REF 2821	Opaque OA2	REF 2829
A4	REF 2822	BL (Bleach)	REF 2831
B1	REF 2824	WO (White Opaque)	REF 2832

¹US Patent No: 8,641,416 B2

Admira Fusion x-tra



Technical Data

Filler degree	84.0 % w/w
Shrinkage	1.25 Vol.-% analogous
Shrinkage stress	3.87 MPa analogous
3-Point-flexural strength	136 MPa
Compressive strength	307 MPa analogous
Modulus of elasticity	10,090 MPa
Curing depth	4.05 mm / 20 s
Radiopacity	296 %Al
Water uptake	13.4 µg / mm ³
Solubility in water	≤ 0.1 µg / mm ³

Nano-ORMOCER® bulk-fill restorative material

Indications

Class I and II posterior restorations
 Base in Class I and II cavities
 Class V restorations
 Locking, splinting of loose anteriors
 Repairing veneers, small enamel defects and temporary C&B materials
 Extended fissure sealing
 Restoration of deciduous teeth
 Core build-up

Advantages

- The world's first all ceramic-based bulk-fill restorative material
- Fast and high-quality – reliable curing of 4 mm increments
- Nano-ORMOCER® technology reduces shrinkage and shrinkage stress by up to 50 % compared to bulk-fill composites and leads to outstanding shade stability
- Excellent handling, simple high-luster polishing procedure coupled with high surface hardness guarantee first-class long-term results
- High 84 % fill rate for high wear resistance
- Universal shade with chameleon effect
- Compatible with all conventional bonding agents
- VOCO presents its individual cross contamination prevention packaging for capsules

Presentation

REF 2810 Syringe 3 g – universal
 REF 2811 Caps 15 x 0.2 g – universal
 REF 9301 1 Caps Dispenser

Admira Fusion x-base



NEW

NOT
 non dripping
 technology


 pure silicate
 technology

Technical Data	
3-Point flexural strength	104 MPa
Compressive strength	256 MPa analogous
Modulus of elasticity	5,698 MPa
Polymerisation shrinkage	2.5 % v/v analogous
Radiopacity	250 %Al
Water absorption	16.36 µg/mm³
Water solubility	<0.1 µg/mm³
Filler content	72.0 % w/w
Depth of curing	4.49 mm/20 s
Thermal expansion coefficient	54.7·10 ⁻⁶ ·K ⁻¹

Nano-ORMOCER® flowable base restorative material

Indications

Base restorative in Class I and II fillings
 As a base/liner for Class I and II fillings
 Small, non occlusion-bearing Class I fillings
 Class III and V fillings
 Extended fissure sealing
 Blockout of undercuts
 Repair of small enamel defects
 Repair small defects in esthetic indirect restorations
 Repair of provisional C&B materials
 Core build-up

Advantages

- All ceramic-based nano-ORMOCER® Technology
- 4 mm depth of cure for ease and speed
- High fill rate of 72% w/w for better wear
- Extremely low polymerization shrinkage (2.5% by volume)
- Particularly low shrinkage stress with optimal marginal integrity
- Highly biocompatible and extremely color-stable
- Ideal flowability for excellent adaptation
- Outstanding handling, even in difficult-to-access areas
- Available in the patented NDT®¹ syringe
- Compatible with all conventional adhesives
- Compatible with all conventional resin-based and ORMOCER®-based restorative materials

Presentation

REF 2812 Syringe 2 × 2 g universal, accessories
 REF 2148 Intraoral tip type 46, 100 pcs.

¹US Patent No: 8,641,416 B2

x-tra fil



Fast bulk-fill packable posterior composite

Indications

Restorations Class I and II

Core build-up

Technical Data

Volumetric Shrinkage	1.7 %
Surface Hardness	142 MHV
Wear (ACTA)	43 µm
Flexural Strength	142 MPa
Radiopacity	330 % Al
Filler Content	86 % by weight

Advantages

- **x-tra fast**
 - 4 mm cure in 10 sec
 - Use with Futurabond NR/DC/U *SingleDose* to bond, fill and cure 4 mm in less than 60 sec.
- **x-tra durable**
 - Low shrinkage of 1.7 % through multi-hybrid filler technology
 - 86% filled by weight for great wear resistance
- **x-tra easy**
 - One universal shade fits all. High translucency provides excellent chameleon effect for good esthetics
 - Highly radiopaque (330 % Al)
 - Perfect for fast core build-ups
- **x-tra safe**
 - VOCO presents its individual cross contamination prevention packaging for capsules

Clinical Case



Source: Dr. Ulrich Sachse, Kiel

Presentation

REF 1740 Pack 1 × 5 g syringe, shade universal
 REF 1741 Pack 20 × 0.25 g caps, shade universal
 REF 9301 1 Caps Dispenser



Fast bulk-fill flowable posterior composite

Indications

Base for Class I and II cavities

Cavity liner under direct restorative materials in Class I and II cavities

Small, non-occlusal stress-bearing Class I restorations according to minimally invasive filling therapy

Class III and V restorations

Extended fissure sealing

Undercut blockout

Repair of small enamel defects

Repair of small defects in aesthetic indirect restorations

Repair of temporary C&B materials

Core build-up

Advantages

- 4 mm cure in 10 sec saves time*
- Low shrinkage stress allows bulk-fill speed
- High strength makes it suitable for open and closed sandwich technique
- Smart self-leveling properties for excellent wall adaptation without slumping out of maxillary restorations
- High radiopacity (350% AI) for easy x-ray identification
- Available in patented non-dripping NDT^{®1} syringes or unit dose caps with extra long bendable needle tip
- Available in shades A2 and Universal

*Universal shade

Technical Data	
Filler Content	75 % by weight
Shrinkage Stress	5.93 MPa
Volumetric Shrinkage	2.54 %
Surface Hardness	100 MHV
Wear (ACTA)	46.1 µm
Flexural Strength after TC	141 MPa
Radiopacity	350 % AI

Presentation

REF 1790	Pack 2 × 2 g Syringe, shade Universal
REF 1791	Pack 2 × 2 g Syringe, shade A2
REF 1794	Pack 16 × 0.25 g Caps, shade Universal
REF 1795	Pack 16 × 0.25 g Caps, shade A2
REF 2148	intraoral tips type 46 – 100 pack
REF 9301	1 Caps Dispenser

¹US Patent No: 8,641,416 B2

Twinky Star



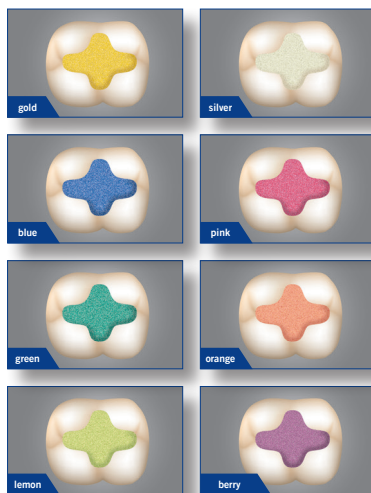
Light-cured colored compomer filling material with glitter effect for deciduous teeth

Indications

Filling of deciduous teeth

Advantages

- 8 attractive colors
- Fast and easy direct application
- Excellent polishability
- Color guide with original material



Presentation

REF 1680 kit 40 × 0.25 g Caps in eight different colors, color guide
REF 9301 1 Caps Dispenser

refill pack 25 × 0.25 g Caps each:

REF 1681 shade "Gold"	REF 1685 shade "Green"
REF 1682 shade "Silver"	REF 1686 shade "Orange"
REF 1683 shade "Blue"	REF 1687 shade "Lemon"
REF 1684 shade "Pink"	REF 1688 shade "Berry"
	REF 1689 Color Guide

Technical Data

Transverse strength	110 MPa	(ISO 4049)
Compressive strength	316 MPa	(ISO 9917)
Wear	14.6 µm	(ACTA 250,000 cycles)
Filler by weight	77.8%	(DIN 13922)
Polymerization Shrinkage	2.00 vol %	

Caps Warmer



NEW

Preheating device for composite caps

Indication:

Device for warming composite caps

Advantages

- Composite warming increases the viscosity of a composite making the application easier
- Warms 2 finishing instruments, making it easier to sculpt the composite
- Holds 4 spare composite caps
- 3 heat levels for different viscosities
- No decrease of physical properties of VOCO materials

Celalux 3



High intensity, light-weight, cordless LED curing light

Advantages

- Only 2.5 oz weight – more user-friendly
- Vibration after 10 and 20 seconds – no more annoying beeps make it more patient friendly
- High light intensity at 1,300 mW/cm² – ensures high depth of cure
- Wavelength of 450-480 nm wavelength – allows curing of virtually all modern materials
- Includes spare battery to eliminate unnecessary down time

Technical Data

Wavelength range	450–480 nm
Light intensity (output)	1,300 mW/cm ²
Total Operation Time	> 45 cycles of 20 sec cures w/ full charged battery
Operating voltage	100-240 V AC 50/60 Hz
Handpiece length	Ø 12.6 mm x L 210 mm
Handpiece weight	70 g (incl. device base and light guide)

Presentation

REF 9001 Caps Warmer

Presentation

REF 9090 Celalux 3 (handpiece, battery charger, power cord with interchangeable main adapters, 2 lithium polymer batteries, 8 mm light guide, rubber shield, operating instructions)

REF 9091 Light guide 8 mm, autoclavable

REF 9092 Device base (Battery)

REF 9093 Rubber shield, 5 pcs.



One step diamond polisher for pre-polishing and high gloss polishing of resin-based restoratives

Indications

Pre-polishing and high gloss polishing of finished composite restorations

Advantages

- Pre-polish to high gloss with one polisher
- Designed and precisely manufactured for easy insertion into your contra-angle handpiece
- Five diamond-impregnated silicone polishers to meet all your resin-based restorative polishing needs
- Use wet or dry; no polishing paste needed
- Autoclavable



Presentation

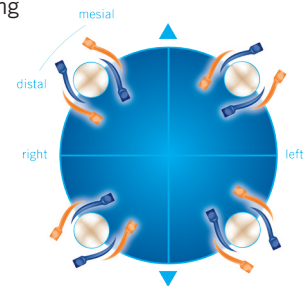
REF 2380	kit 5 pcs. mixed (one each of small point, large point, small cup, large cup, lens)
REF 2381	small point (10 pcs.)
REF 2382	large point (10 pcs.)
REF 2383	small cup (10 pcs.)
REF 2384	large cup (10 pcs.)
REF 2385	lens (10 pcs.)



3D shaped anatomical curved wedges for use with matrices in restorative techniques

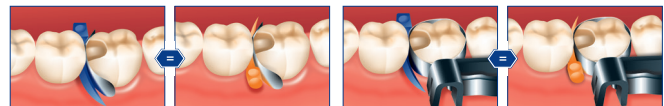
Advantages

- The 3D design allows the wedges to follow the contour of the tooth
- Reduces tissue irritation and post operative discomfort
- Assists the adaptation of most commonly used matrix bands for a more precise and faster finishing
- Easily inserted and removed with cotton pliers
- Available in 4 sizes (small, medium, large and extra large) in clockwise (orange) and counter-clockwise (blue) circular blister packs
- Made of biocompatible plastic: no moisture expansion, discoloration, or splintering



Use with a matrix strip:
Insertion of the wedge from oral (blue) or vestibular (orange).

Use with a Tofflemire matrix band:
Insertion of the wedge from oral (blue) or vestibular (orange).



Presentation

REF 2060	Curvy kit 6 x 52 pieces mixed (small, medium & large)
REF 2061	Curvy 6 x 52 pieces small
REF 2062	Curvy 6 x 52 pieces medium
REF 2063	Curvy 6 x 52 pieces large
REF 2064	Curvy 6 x 52 pieces extra large



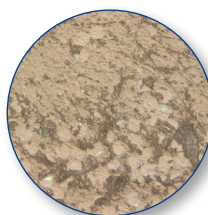
Resin-impregnated, light-cured glass fiber reinforced strands for use in the dental adhesive technique

Indications

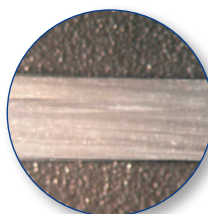
For the reinforcement and stabilization of teeth in the dental adhesive technique

Advantages

- Three times the reinforcement strength compared to polyethylene materials
- The ideal companion for the stabilization of teeth after orthodontic or periodontal therapy
- The perfect reinforcement in the fabrication of crowns and bridges
- For the temporary treatment of missing teeth; can also be used in the osseointegration process of an implant and in trauma therapy
- Compatible with all light-curing bonds and composites in direct and indirect restorations
- Does not rebound, unravel or fall apart when cut or adapted
- Safe and biocompatible
- No special gloves or tools needed



The adjacent photo shows a section from a GrandTEC glass fiber, bonded with Grandio Flow. The strong cohesion between the impregnated glass fiber and the flow composite are impressively documented here. The E modulus of the test specimen achieved a value of more than 13 MPa; the transverse strength is 5 x higher than with composites without the additional use of GrandTec glass fiber.



The adjacent enlargement shows the homogeneous progression of the densely packed glass fibers with GrandTEC.



Presentation

REF 1168 5 glass fiber strands 55 mm each

Technical Data

3-point Flexural Strength (2 × 2) (in combination with Grandio Flow)	655 MPa	analogous ISO 4049
Modulus of Elasticity (2 × 2) (in combination with Grandio Flow)	13,600 MPa	derived from flexural strength test

Restoratives (Glass Ionomer Materials)

Page			class I	class II	class III	class V / cervical defects	base / liner / core build-ups	extended fissure sealing	restorations of deciduous teeth	temporary treatment	working time [min.]	setting time [min.]
Glass ionomer restorative materials												
33	Ionostar Plus	glass ionomer restorative material	• ^{1,2}	• ²	•	•	•	•	•	•	1	2
33	Ionostar Molar	glass ionomer restorative material	• ^{1,2}	• ²	•	•	•		•	•	1.5	3 - 4
Light-curing glass ionomer restorative materials												
11	Ionoseal	glass ionomer composite cement					•	•				light-curing: 20 s
34	Ionolux	glass ionomer restorative material	• ³		•	•	•		•	•	> 3	light-curing: 20 s

¹ non occlusion-bearing
² semi-permanent
³ small fillings

An overview of our composite restorative materials can be found on page 16.



Fast-setting glass ionomer restorative material

Indications

Restorations of non-occlusal bearing Class I cavities
Semi-permanent restorations of Class I and II cavities
Restorations of cervical lesions, Class V cavities, root caries
Restorations of Class III cavities
Restoration of deciduous teeth
Base / Liner
Core build-up
Temporary restorations
Extended fissure sealing

Advantages

- Fast set time saves valuable chair time
- Does not stick to instrument for ease of application
- Two (2) stage consistency for easy adaptation yet still packable
- Perfect wetting behavior for excellent marginal adaptation
- High translucency for better esthetic results
- Tooth-like fluorescence for better esthetic results
- Excellent physical properties support long-lasting restorations
- High fluoride release minimizes secondary caries

Presentation

REF 2540	Kit application capsules 50 pcs. (10 × A1, 30 × A2, 10 × A3)
REF 2548	Application capsules 20 pcs. A1
REF 2543	Application capsules 20 pcs. A2
REF 2544	Application capsules 20 pcs. A3
REF 2545	Application capsules 20 pcs. A3.5
REF 2546	Bulk Pack: Application capsules 150 pcs. A2
REF 2547	Bulk Pack: Application capsules 150 pcs. A3
REF 2331	1 AC Applicator Type 1
REF 2334	1 AC Applicator Type 2

Glass ionomer restorative material

Indications

Restorations of non-occlusal bearing Class I cavities
Semi-permanent restorations of Class I and II cavities
Restorations of cervical lesions, Class V cavities, root caries
Restorations of Class III cavities
Restoration of deciduous teeth
Base / Liner
Core build-up
Temporary restorations

Advantages

- Does not stick to instrument for ease of application
- Adjustable consistency so you can pick your preference
- Perfect wetting behavior for excellent marginal adaptation
- Immediately packable can be shaped immediately after application and remains stable
- High translucency enables better esthetic results
- Excellent physical properties support long-lasting restorations
- High fluoride release that minimizes secondary caries

Presentation

REF 2520	Kit application capsules 50 pcs. (10 × A1, 30 × A2, 10 × A3)
REF 2522	Intro Kit application capsules 150 pcs. A2, AC Applicator type 1
REF 2523	Intro Kit application capsules 150 pcs. A3, AC Applicator type 1
REF 2532	Bulk Pack: Application capsule 150 pcs. A2
REF 2533	Bulk Pack: Application capsule 150 pcs. A3
REF 2524	Application capsule 20 pcs. A1
REF 2525	Application capsule 20 pcs. A2
REF 2526	Application capsule 20 pcs. A3
REF 2331	1 AC Applicator Type 1
REF 2334	1 AC Applicator Type 2

Ionolux

Light-cured resin modified glass ionomer restorative material

Indications

Class III and V restorations, primarily cervical fillings and root caries

Restoration of deciduous teeth

Small Class I restorations

Temporary restorations

Core build-ups

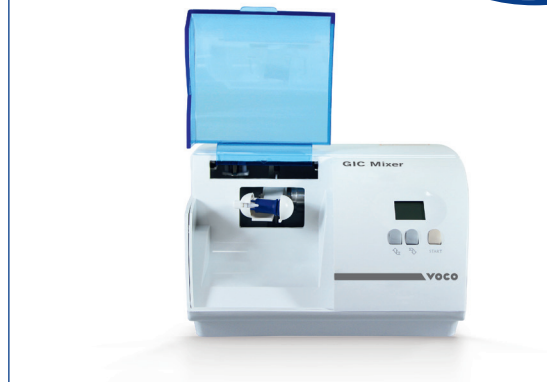
Linings

Advantages

- Composite-like esthetics
- Light-curing for fast finish
- Immediately packable after application
- Does not stick to the instrument, easy to shape
- Excellent translucency for better esthetic results
- High fluoride release minimizes secondary caries
- Highly radiopaque
- No dentin conditioner or adhesive needed

Presentation

REF 2115	Kit application capsule 50 pcs. (10 × A1, 30 × A2, 10 × A3)
REF 2117	Application capsule 20 pcs. A1
REF 2118	Application capsule 20 pcs. A2
REF 2119	Application capsule 20 pcs. A3
REF 2120	Application capsule 20 pcs. A3.5
REF 2121	Application capsule 20 pcs. B1
REF 2122	Bulk Pack: Application capsule 150 pcs. A2
REF 2123	Bulk Pack: Application capsule 150 pcs. A3
REF 2331	1 AC Applicator Type 1
REF 2334	1 AC Applicator Type 2

GIC Mixer**NEW**

Capsule mixing device

Indications

Device for mixing powder and liquid in application capsules

Advantages

- High oscillating frequency of 4,600 rpm, creating a particularly homogeneous mixture of powder and liquid
- Modern design
- Capsule holder allows simple insertion and removal of capsules
- User-friendly
- Quiet and practically vibration-free
- Mixing times can be freely selected between 1 and 99 seconds

Presentation

REF 9050	GIC Mixer - 1 pc.
----------	-------------------

Final Varnish LC



Light-cured varnish for sealing of glass ionomer fillings

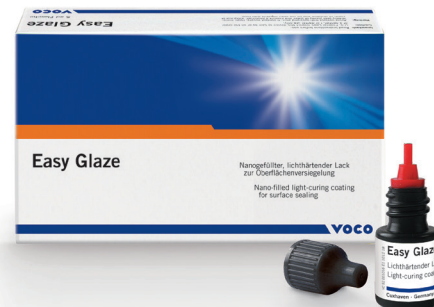
Indications

Sealing and surface covering of glass ionomer restorations
Protection against moisture and dehydration

Presentation

REF 1241 Pack 2 x 3 ml bottles

Easy Glaze®



Nano-filled, light-cured liquid polish and surface sealant

Indications

Surface sealing of glass ionomer cements, provisional crowns and bridges and definitive composite restorations
Protecting glass ionomer cement surfaces against the effects of moisture and dehydration immediately after placement
Sealing glass ionomer cement liners/build-up restorations before taking impressions
Sealing and protecting adhesive interfaces between restoration and tooth structure

Advantages

- Finish temporary and permanent restorations in seconds
- Natural gloss and tooth-like fluorescence
- Can be used on all types of direct and indirect restorations
- Nano-filled for better wear resistance
- Works with LED, PAC and halogen curing lights
- Protects against staining and discoloration
- Increase patient satisfaction
- Excellent protection of Glass Ionomers against moisture and dehydration

Presentation

REF 1016 bottle 5 ml, accessories
REF 2245 easy brushes – 50 pack

V-Posil Heavy Soft Fast · V-Posil Putty Fast



Time optimized VPS tray material

Indications

V-Posil Heavy Soft Fast is to be used as heavy body material for:

- one-step impression technique (simultaneous technique) using dual viscosities
- two-step impression technique using dual viscosities
- functional impressions

V-Posil Putty Fast is used as a preliminary material for:

- two-step putty-wash impression technique
- one-step putty-wash impression technique
- two-step putty-wash impression technique using a foil (plastic putty spacer)
- one-step putty impression technique for forming functional peripheries

Advantages

- Up to 2-minutes of adjustable working time- gives control over the pace of the procedure, while the abbreviated 2-minutes thermo-activated set time saves time and improves patient comfort
- The rapid snap set reduces the time in the critical zone by up to 50% minimizing potential distortion due to human error resulting in less re-takes
- Heavy Soft Fast material offers an optimal viscosity to load the tray but remains soft enough after it sets for easy removal from the mouth
- Due to its low polyether-like contact angle of less than 10°, V-Posil's superior hydrophilicity displaces fluids (saliva, blood, etc.) creating an enhanced contact to the dental anatomy- yielding more precise impressions
- Lab technicians will appreciate the post-set hydrophilicity (<6° contact angle) which allows for more accurate stone models and better fitting restorations
- Exceptional tear strength and elastic recovery ensures dimensional accuracy of the impression during and after removal

Presentation

V-Posil Heavy Soft Fast

REF 2565	Cartridge 1 × 380 ml, mixing tips type 30
REF 2566	Cartridge 2 × 380 ml
REF 2567	Cartridge 2 × 50 ml, mixing tips type 16
REF 2568	Cartridge 10 × 50 ml
REF 2196	Mixing Tips Type 16 50 pk (50 ml)
REF 2203	Mixing Tips Type 30 50 pk (380 ml)

V-Posil Putty Fast

REF 2561	Jar 2 × 450 ml
REF 2562	Jar 8 × 450 ml

V-Posil Light Fast • X-Light Fast • Mono Fast



Time optimized VPS impression system

Indications

V-Posil Light Fast & V-Posil X-Light Fast are used as syringeable impression materials for:

- two-step putty-wash impression technique
- one-step putty-wash impression technique
- one-step impression technique using a foil (plastic putty spacer)
- one-step impression technique (simultaneous technique) using dual viscosities
- reline impressions
- fabricating full or partial dentures

V-Posil Mono Fast is to be used as a medium bodied tray or syringeable impression material for:

- taking impressions over fixed/removable restorations and implants (i.e., transferring impression posts and bridge components)
- functional impressions
- fabricating crown and bridgework or inlays
- fabricating full or partial dentures
- reline impressions
- transferring root posts when fabricating posts and cores indirectly
- Multi tray technique
- use in the simultaneous mixing technique as well as the putty-wash technique

Advantages

- Excellent flow without slumping
- Up to 2-minutes of adjustable working time- gives control over the pace of the procedure, while the abbreviated 2-minute thermo-activated set time saves time and improves patient comfort
- Setting times of the light body wash and heavy body tray materials are synchronized (match).
- The rapid snap set reduces the time in the critical zone by up to 50% minimizing potential distortion due to human error resulting in less re-takes
- Due to its low polyether-like contact angle of less than 10°, V-Posil's superior hydrophilicity displaces fluids (saliva, blood, etc.) creating an enhanced contact to the dental anatomy- yielding more precise impressions
- Lab technicians will appreciate the post-set hydrophilicity (< 6° contact angle) which allows for more accurate stone models and better fitting restorations
- Exceptional tear strength and elastic recovery ensures dimensional accuracy of the impression during and after removal

Presentation

V-Posil Light Fast

REF 2573 Cartridge 2 × 50 ml, mixing tips type 7
REF 2574 Cartridge 10 × 50 ml
REF 2186 Mixing tip type 7 – 50 pk
REF 2141 Intraoral tips type 3 – 50 pk

V-Posil X-Light Fast

REF 2575 Cartridge 2 × 50 ml, mixing tips type 7
REF 2576 Cartridge 10 × 50 ml
REF 2186 Mixing tip type 7 – 50 pk
REF 2141 Intraoral tips type 3 – 50 pk

V-Posil Mono Fast

REF 2569 Cartridge 1 × 380 ml, mixing tips type 30
REF 2570 Cartridge 2 × 380 ml
REF 2571 Cartridge 2 × 50 ml, mixing tips type 16
REF 2572 Cartridge 10 × 50 ml

REF 2196 Mixing tip type 16 – 50 pk (50 ml)
REF 2203 Mixing tip type 30 – 50 pk (380 ml)
REF 2133 Intraoral tips type 6 – 50 pk

V-Posil Adhesive



Tray adhesive for VPS impression materials

Indications

Bonding of VPS impression materials to metal and acrylic trays

Advantages

- High bond strength to VPS impression materials and trays
- Blue color for easy visual inspection while applying

Presentation

REF 2578 Bottle 10 ml

VOCO Dynamic Dispenser

NEW



Dynamic mixing device

Indications

Apparatus for automatic dosing and mixing of VOCO impression materials in the 5:1 cartridge

Advantages

- Homogeneous dynamic mixing of V-Posil components to ensure consistently high material quality
- Bubble-free dispensing
- Fill level display
- Two feed speeds
- Electronic residual detection

Presentation

REF 9140 Mixing device 110 V int. E1
REF 2203 Mixing tips type 30, 50 pcs.

Registrado X-tra



Extra hard, fast and flexible bite registration A-silicone

Indications

Bite registration
Fixing of face bow registration
Location material for intra-oral pin tracing template

Advantages

- Optimal rigidity for precise trimming
- Two-phase set: After 40 sec. the material is hard and dimensionable stable but still elastic for easy removal. Extreme final hardness is reached after 90 sec.
- Firm non-dripping consistency
- Thixotropic for easy application and no occlusion resistance
- Temperature-controlled setting for sufficient application time and short intraoral set time (only 30–40 sec.)
- Good contrast for easy identification
- Convenient trimming with scalpel, scissors or cutter
- Intraoral tips provide a flat ribbon of material for better coverage of the occlusal surface
- No distortion in articulation, especially in free-end situations



Presentation

REF 2035 pack 2 x 50 ml 1:1 cartridges, mixing tips type 16, intraoral tips type 2
REF 2036 clinic pack 8 x 50 ml cartridges, mixing tips type 16, intraoral tips type 2
REF 2196 mixing tips type 16 – 50 pack
REF 2140 intraoral tips type 2 – 50 pack

Registrado Clear

Only available in Canada



Transparent A-silicone fast-setting bite registration material

Indications

Bite registration
Registration key for intraoral support pin registration
Fixation of X-ray balls
Front and occlusal stamp
Silicone key for composite fillings

Advantages

- High final end hardness and high translucency
- Guaranteed to remain on the occlusal surface with great consistency
- Timed controlled curing process – curing time is accelerated when the patient's mouth is closed
- Perfect for light-curing through the material
- Great dimensional stability (>99%)

Presentation

REF 2037 pack 1 x 50 ml 1:1 cartridge, accessories
REF 2158 Type 2 dispenser
REF 2196 mixing tips type 16 – 50 pack

Grandio blocs

NEW



Nano-Ceramic Resin Hybrid CAD/CAM Block

Indications

Crowns, inlays, onlays, veneers
Implant supported crowns

Advantages

- 86 % filled for enhanced strength and excellent wear resistance
- Tooth-like elasticity and thermal expansion allows for thinner crown margins
- Natural esthetics with enhanced color stability and polish retention
- No firing required for true one appointment dentistry
- Easy intraoral polishability, characterization and repair

Technical Data

Biaxial Flexural strength	333 MPa
Vickers hardness (HV)	154.6
Two-body-wear (specimen)	59.9 μm
Two-body-wear (antagonist)	98.1 μm
Filler content	86 % by weight
Thermal expansion coefficient	$16.0 \cdot 10^{-6} \text{ K}^{-1}$
Compressive strength	530 MPa analog
Modulus of elasticity	18.28 GPa analog
Water absorption	13.6 $\mu\text{g}/\text{mm}^3$ analog
Water solubility	< 0.1 $\mu\text{g}/\text{mm}^3$ analog
Radiopacity	308 %AI

Presentation

REF 6000 Set Blocks 2 x Gr. 12 (A2 LT, A2 HT), 3 x Gr. 14L (A1 LT, A2 LT, A2 HT), Bifix QM QuickMix syringe 10 g universal, Futurabond U SingleDose 5 pcs, Ceramic Bond bottle 5 ml, Dimanto set, accessories

shade	5 x Gr. 12 Low translucent (LT)	shade	5 x Gr. 12 High translucent (HT)	shade	5 x Gr. 14L Low translucent (LT)	shade	5 x Gr. 14L High translucent (HT)
A1 LT	REF 6003	A1 HT	REF 6012	A1 LT	REF 6018	A1 HT	REF 6027
A2 LT	REF 6004	A2 HT	REF 6013	A2 LT	REF 6019	A2 HT	REF 6028
A3 LT	REF 6005	A3 HT	REF 6014	A3 LT	REF 6020	A3 HT	REF 6029
A3.5 LT	REF 6006	A3.5 HT	REF 6015	A3.5 LT	REF 6021	A3.5 HT	REF 6030
B1 LT	REF 6007	Mixed (each 1x A1 LT, B1 LT, C2 LT, BL LT, A1 HT)	REF 6033	B1 LT	REF 6022	Mixed (each 1x A1 LT, B1 LT, C2 LT, BL LT, A1 HT)	REF 6034
C2 LT	REF 6008			C2 LT	REF 6023		
BL LT	REF 6009			BL LT	REF 6024		

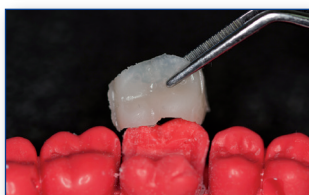
GrandioSO Inlay System



Chairside fabrication of indirect composite inlays

Indications

One office visit composite inlay system



Advantages

- Complete set for chairside fabrication of 15 composite inlays
 - full added value retained in the practice, no laboratory involvement
 - less expensive than CAD/CAM fabricated inlay
- Highest quality, perfectly coordinated components
 - quick and simple fabrication of models
 - the premium composite GrandioSO guarantees durability and aesthetics
 - Futurabond DC and Bifix QM for secure bonding and luting
- Simple and efficient method
 - easy and convenient to fabricate, even for large multi-surface restorations
 - fabrication of a row of inlays for treatment of neighboring teeth
 - creation of approximal contacts without having to use the time-consuming and expensive matrix technique
 - perfect occlusal anatomy - modeled extra-orally
 - stress-free fabrication of tooth-color and durable restorations, even in patients who are reluctant to comply or non-compliant

Presentation

- REF 2642 Kit-Cartridge 3 x 50 ml die silicone, 15 x 0.25 g GrandioSO Caps (5 each A1, A2, A3), 15 Futurabond DC *SingleDose*, 10 g QuickMix syringe Bifix QM universal, Dimanto set (one each of small point, large point, small cup, large cup, lens), accessories
- REF 1186 Die silicone – cartridge 2 x 50 ml, mixing tips type 20
- REF 2202 mixing tips type 20 (Die Silicone) – 50 pack
- REF 2191 mixing tips type 11 (Bifix QM) – 50 pack



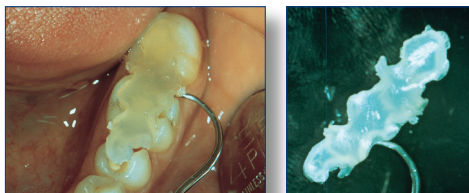
Light-cured provisional filling material in caps or syringes

Indications

All kinds of temporary fillings, temporary protection for inlay and onlay technique

Advantages

- Can be easily removed in one piece
- Easy handling
- Remains flexible even after curing
- Excellent cavity sealing
- Transparent, no discoloration
- Does not stick to instrument
- No material waste
- Time saving – no handmixing required



Technical Data

Depth of curing	11 mm
Surface hardness	90 Shore A
Diametrical tensile strength	27 MPa
Water solubility (14 days)	0.46 %
Marginal seal behavior	0.5 VAS

Presentation

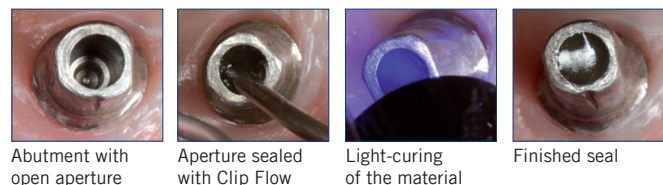
REF 1284	pack 2 × 4 g syringes
REF 1285	tripack 3 × 4 g syringes
REF 1287	pack 25 × 0.25 g Caps
REF 9301	1 Caps Dispenser

Indications

- Temporary inlay and onlay treatments of the cavity
- Sealing of openings for implant screws
- Relining material for temporary crowns and bridges
- Block out material for retentive areas in the dental arch, e.g. before taking impressions
- Covering of the gingival margin
- Fixing of resin matrices during filling placement
- Temporary filling of cavities

Advantages

- Easy to place – easy to remove in one piece
- No damage to preparation boundaries
- Durable and saliva-proof
- Non-sticky
- Time-saving through light-curing
- Elastic
- Flowable
- NDT^{®1} syringe



Presentation

REF 1282	Syringe 2 × 1.8 g, accessories
REF 2148	Application tips type 46, 100 pcs.

¹US Patent No: 8,641,416 B2



Medium retention non-eugenol temporary cement with calcium hydroxide in syringes, cartridges or tubes

Indications

Temporary cementation of crowns and bridges

Advantages

- Calcium hydroxide reduces postoperative sensitivities and has an antimicrobial effect
- Good adhesion of temporaries
- Low film thickness for easy placement of temporary crowns & bridges for a perfect fit
- Peelable consistency for easy clean-up
- Highly economical direct application
- No eugenol allergies
- No inhibition of curing reaction of resin-based filling or luting materials or glass ionomer cements

QuickMix syringe advantages

- New quick and easy to use delivery system
- No hand mixing: no air bubbles and a predictable homogenous mix every time
- No mess, no hardened tubes
- 50 % less waste in the mixing tips when compared to hand mixing waste
- Small tips have 80 % less waste than traditional cartridge systems

Presentation

REF 1074	pack 5 ml QuickMix syringe, mixing tips type 10
REF 2189	mixing tips type 10 – 50 pack
REF 1076	pack 2 x 65 g cartridges, 40 mixing tips type 6
REF 2185	mixing tips type 6 – 50 pack
REF 1075	pack 25 g base, 25 g catalyst in tubes



Strong retention non-eugenol temporary luting cement with calcium hydroxide

Indications

Temporary luting of provisional restorations

(crowns, bridges, inlays and onlays)

Temporary luting of definitive restorations

(crowns, bridges, inlays and onlays)

Temporary obturation of small single-surface cavities

Advantages

- Increased strength for more retention and secure adhesion
- Calcium hydroxide reduces postoperative sensitivities and has an antimicrobial effect
- Low film thickness for easy placement of temporary crowns & bridges for a perfect fit
- Peelable consistency for easy clean-up
- Highly economical direct application
- No eugenol allergies
- No inhibition of curing reaction of resin-based filling or luting materials or glass ionomer cements
- High level of radiopacity

Presentation

REF 1098	QuickMix syringe 5 ml, accessories
REF 1099	Set QuickMix syringe 3 x 5 ml (2 x Provicol QM, 1 x Provicol QM Plus), accessories
REF 2189	mixing tips type 10 - 50 pack



Dual-cured, transparent, composite-based temporary cement material

Indications

Temporary cementation of provisional restorations

Advantages

- White translucent shade – high esthetics
- Dual-cured – fast setting and “tack cure” for excess removal
- Strong adhesion – secures long-term temporaries
- Easy excess removal in light-and chemical-cure mode – fast working
- 5 µm film thickness – no “jack-ups” of temporaries
- Short mixing tip – less waste

Presentation

REF 1055 QuickMix syringe 5 ml universal, accessories
REF 2188 mixing tips type 9 – 50 pack



Nano-filled, quick setting, strong temporary crown & bridge material with “Wipe & Go” Technology

Indications

Fabrication of temporary crowns, bridges, inlays, onlays, partial crowns, veneers and temporary posts

Fabrication of long-term temporaries

Lining of pre-fabricated temporary crowns made from composite materials, polycarbonate or metal

Advantages

- **1. Fast and Economical**
 - No more polishing – just wipe with alcohol for a brilliant gloss
 - Only 45 sec. intra-oral setting time
 - Small mixing tips and no more “bleeding” before changing mixing tips yields at least 20 more units per cartridge compared to 10:1 and 4:1 products
- **2. Durable**
 - High fracture resistance and compressive strength
 - Suited for long-span bridges and long-term provisionals
- **3. Aesthetic**
 - Natural gloss and tooth-like fluorescence
 - Color stable for long-term use
 - Available in eight VITA matching shades

Technical Data

Working time	30–50 sec.
Intraoral Setting Time	40–70 sec.
E-modulus	1,900 MPa
Diametral Tensile Strength	48 MPa
Compressive Strength	509 MPa
3-point Flexural Strength (24 hrs, 37°C stored in Water)	113 MPa
Fluorescence	Yes
Setting temperature	max. 3.6°F above mouth temp.

Presentation

REF 2500 Intro Kit 50 ml Cartridge, shade A2, dispenser type 2, mixing tips type 6

REF 2501 Intro Kit 50 ml Cartridge, shade A3, dispenser type 2, mixing tips type 6

shade	Cartridge 50 ml, mixing tips type 6	shade	Cartridge 50 ml, mixing tips type 6
A1	REF 2503	B1	REF 2507
A2	REF 2504	B3	REF 2508
A3	REF 2505	C2	REF 2509
A3.5	REF 2506	Bleach (BL)	REF 2510

REF 2512 Cartridge 5 × 50 ml, shade A2, mixing tips type 6

REF 2513 Cartridge 5 × 50 ml, shade A3, mixing tips type 6

REF 2185 mixing tips type 6 (Cartridge) – 50 pack

REF 2189 mixing tips type 10 (QM syringe) – 50 pack

Structur 3 QuickMix syringe

shade	QuickMix syringe 5 ml, mixing tips type 10	shade	QuickMix syringe 5 ml, mixing tips type 10
A1	REF 2515	A3	REF 2517
A2	REF 2516	B1	REF 2518

Structur® Premium



Highly durable, fast setting BIS-Acrylic temporary crown and bridge material with added flexural strength

Indications

Temporary crowns, bridges, inlays and onlays

Technical Data	
Working time	30 sec.
Setting time in mouth	30–45 sec.
Transverse strength (10 min.)	100 MPa
Transverse strength (7 days water storage)	119 MPa
Flexural module	2,500 MPa
Compressive strength	450 MPa
Diametral tensile strength	48 MPa
Setting temperature	max. 3.6 °F above mouth temp.
Fluorescence	yes

Advantages

- Ceramic-like esthetics
 - brilliant gloss
 - natural fluorescence
- Hard as enamel
 - high fracture resistance, compressive and tensile strengths – ideal for long-span bridges
- Easy handling
 - fast and easy trimming and polishing
 - minimal inhibition layer
 - 1:1 standard dispenser
 - fast intraoral setting time (30-45 sec.)

Presentation

REF 1710 intro kit 75 g cartridge, shade A3, dispenser type 2, mixing tips type 6

shade	pack 75 g safety cartridge, mixing tips type 6	shade	pack 75 g safety cartridge, mixing tips type 6
A1	REF 1712	B1	REF 1718
A2	REF 1713	B3	REF 1715
A3	REF 1714	Bleach (BL)	REF 1716
A 3.5	REF 1717		

REF 1719 bulk pack 5 × 75 g cartridges, shade A3, mixing tips type 6

REF 2185 mixing tips type 6 (Cartridge) – 50 pack



Initial situation



Structur Premium temporary

Source: Images are a courtesy of Dr. Frank Milnar



Fast setting temporary BIS-Acrylic crown and bridge material in 1:1 cartridge and Quick Mix syringe

Indications

Temporary crowns, bridges, inlays and onlays

Advantages

- Fast setting time: less than 1 minute in the mouth
- Strong and wear-resistant
- Better esthetics: available in 8 popular shades
- Long-term color stability and composite-like polishability
- Quick and easy automix application: ideal bubble-free consistency
- Economical due to smallest possible tips: up to 40% less waste
- MMA-free: no unpleasant taste or smell
- Minimal shrinkage
- Low exothermic setting temperature

Presentation

REF 1499 intro kit 75 g cartridge, shade A2, dispenser type 2, mixing tips type 6
 REF 1478 intro kit 75 g cartridge, shade A3, dispenser type 2, mixing tips type 6
 REF 1492 bulk pack 5 × 75 g cartridges shade A2, mixing tips type 6
 REF 1491 bulk pack 5 × 75 g cartridges shade A3, mixing tips type 6
 REF 2185 mixing tips type 6 – 50 pack
 REF 2189 mixing tips type 10 – 50 pack

shade	pack 75 g safety cartridge, mixing tips type 6	shade	pack 75 g safety cartridge, mixing tips type 6
A1	REF 1479	B1	REF 1482
A2	REF 1480	B3	REF 1483
A3	REF 1481	Bleach (BL)	REF 1485
A 3.5	REF 1490	C2	REF 1486

Structur 2 QuickMix syringe

shade	QuickMix syringe 8 g, mixing tips type 10	shade	QuickMix syringe 8 g, mixing tips type 10
A1	REF 1309	A3	REF 1311
A2	REF 1310	B1	REF 1312

Core-Build Up/Cements/Luting Materials

Page			presentation	inlays / onlays			crowns			bridges			Maryland bridges			veneers	posts				attachments ⁴	orthodontic bands	steel crowns
Page		type		ceramic ²	composite	metal	ceramic ²	composite	metal	ceramic ²	composite	metal	ceramic ²	composite	metal		carbon fibre	glassfibre	quartz fibre				
Luting material																							
44	Grandio Core Dual Cure	resin-based	QuickMix syringe														•	•	•	•			
45	Rebilda DC	resin-based	QuickMix cartridge														•	•	•	•			
47	Quick Up	resin-based	QuickMix syringe																		•		
48	Bifix QM	resin-based	QuickMix syringe	•	•	•	•	•	•	•	•	•	•	•	•	•		•	•	•			
49	Bifix SE	resin-based	QuickMix syringe	•	•	•	•	•	•	•	•	•	•	•	•	•		•	•	•			
50	Meron Plus	resin-reinforced GIC ¹	capsule / handmix	•	•	•	•	•	•	•	•	•	•	•	•	•		•	•	•		•	
50	Meron	GIC ¹	capsule / handmix	•	•	•	•	•	•	•	•	•	•	•	•	•						•	

¹ glass ionomer luting cement

² silicate / zirconium dioxide / aluminium oxide ceramics

⁴ ball, Locator®, telescope retention elements, as well as other holding elements



Grandio's Nano-technology for core build-ups

Indications

Adhesive core build-up on vital and non-vital teeth
Cementing of pins and posts

Advantages

- Dentin-like hardness – eliminates ditching
- Stackable consistency
- Nano particles for tooth-like strength and flexibility
- 77% filled for long-lasting success rates
- High radiopacity (365% Al) for easy x-ray identification
- Suitable as a post cement with long endo tips



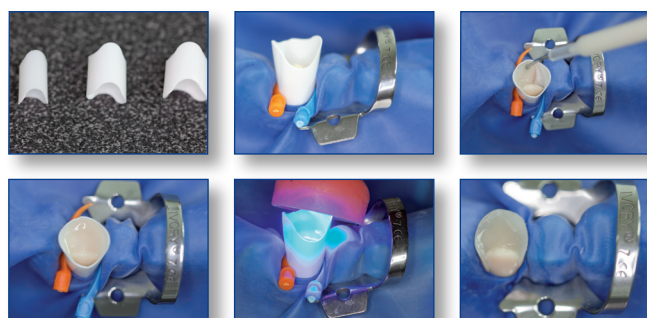
Core build-up forms

Indications

Molds for core build-up in cases of severely disrupted teeth with or without the use of an endodontic post

Advantages

- Simple to use with all composite and core build-up materials
- Three sizes for ease of use and simplicity
- Translucent for photopolymerization
- Specially shaped for quick adaptation to the tooth
- Does not bond to standard composite materials
- Can be easily customized by cutting



Presentation

REF 1910 10 g QuickMix syringe Dentin
REF 1911 10 g QuickMix syringe Blue
REF 1912 10 g QuickMix syringe White
REF 2191 mixing tips type 11 - 50 pack
REF 2142 intraoral tips type 4 - 50 pack

Presentation

REF 1407 20 pcs. small
REF 1408 20 pcs. medium
REF 1409 20 pcs. large

Rebilda® DC



Dual-cured core build-up composite in automix delivery system

Indications

Adhesive core build-up on vital and non-vital teeth
Cementing of pins and posts

Advantages

- Dual-cured: light-cure to accelerate finishing or simply allow Rebilda to self-cure to maximize working time
- Tooth-like surface hardness – cuts like dentin – eliminates ditching
- Low heat development even with large core volumes
- High adhesion with system bond – fewer parapulpal pins
- 3 shades: blue, white and dentin
- High radiopacity
- Fluoride release from both bond and core build-up material
- Curved intraoral tips assist with hard-to-reach areas

Technical Data

Working time	2 min.
Setting time	2 min. (dentin shade)
Transverse strength (ISO 4049)	121 MPa
Shear bonding strength on dentin	22 MPa

Presentation

Cartridge

- REF 1395 intro kit 50 g cartridge Rebilda DC dentin shade, 8 ml Futurabond DC, mixing tips type 12, dispenser type 3, accessories
REF 1396 pack 50 g cartridge Rebilda DC dentin shade, mixing tips type 12, intraoral tips type 3
REF 1397 pack 50 g cartridge Rebilda DC blue shade, mixing tips type 12, intraoral tips type 3
REF 1398 pack 50 g cartridge Rebilda DC white shade, mixing tips type 12, intraoral tips type 3
REF 2192 mixing tips type 12 – 50 pack
REF 2141 intraoral tips type 3 – 50 pack
REF 2199 mixing tips type 19 - 30 pack

QuickMix Syringe

- REF 1402 intro kit 10 g QuickMix syringe Rebilda DC dentin shade, 8 ml Futurabond DC, mixing tips type 11, accessories
REF 1403 pack 10 g QuickMix syringe Rebilda DC dentin shade, mixing tips type 11, intraoral tips type 4
REF 1404 pack 10 g QuickMix syringe Rebilda DC blue shade, mixing tips type 11, intraoral tips type 4
REF 1405 pack 10 g QuickMix syringe Rebilda DC white shade, mixing tips type 11, intraoral tips type 4
REF 2191 mixing tips type 11 – 50 pack
REF 2142 intraoral tips type 4 – 50 pack
REF 2139 intraoral tips type 1 (endo tip) – 50 pack



Rebilda® Post System



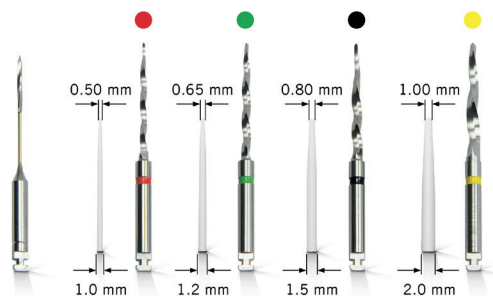
Complete post & core system with fiber reinforced resin posts

Indications

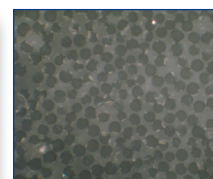
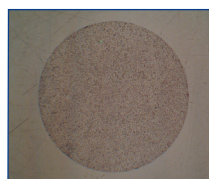
Endodontic post build-up for support and anchorage of coronal restoration in situations with insufficient tooth substance

Advantages

- Highly translucent for excellent esthetics
- High radiopacity (350 %Al)
- Dentin-like elasticity for gentle root treatment
- Dentin-like translucency for esthetic restorations
- High retention rate for strong bond
- Excellent light conduct and diffusion for use with dual-cured materials



Posts illustrations are not the actual size. Ø 1.0 mm is not included in the kit (REF 1770)

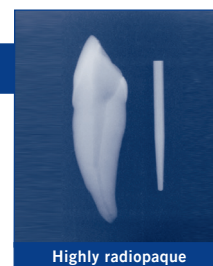


Cross-sections show even distribution of the glass fibers

Presentation

REF 1770 Intro Kit:
15 posts 3 drills: 5 posts each (Ø 1.2 mm, Ø 1.5 mm, Ø 2.0 mm),
1 drill each (Ø 1.2 mm, Ø 1.5 mm, Ø 2.0 mm)

REF 1782 Rebilda Post System Kit II:
5 posts each of (Ø 1.0 mm, Ø 1.2 mm, Ø 1.5 mm, Ø 2.0 mm), 1 drill each of (Ø 1.0 mm, Ø 1.2 mm, Ø 1.5 mm, Ø 2.0 mm), 2 reamer (Ø 0.7 mm), 5 ml Ceramic Bond, 20 Futurabond U *SingleDose*, 10 g QuickMix syringe Rebilda DC dentin, accessories



Highly radiopaque

Refills (posts):

Rebilda Post 1.0, 5 Posts, Ø 1.0 mm
Rebilda Post 1.2, 5 Posts, Ø 1.2 mm
Rebilda Post 1.5, 5 Posts, Ø 1.5 mm
Rebilda Post 2.0, 5 Posts, Ø 2.0 mm
Ceramic Bond, 5 ml Bottle

REF 1775
REF 1772
REF 1773
REF 1774
REF 1106

Refills (drills):

Rebilda Post 1.0, 1 Drill, Ø 1.0 mm
Rebilda Post 1.2, 1 Drill, Ø 1.2 mm
Rebilda Post 1.5, 1 Drill, Ø 1.5 mm
Rebilda Post 2.0, 1 Drill, Ø 2.0 mm
3 x Rebilda Post Reamers Ø 0.7 mm

REF 1780
REF 1777
REF 1778
REF 1779
REF 1769

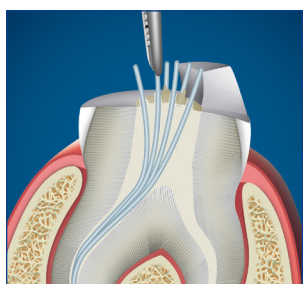
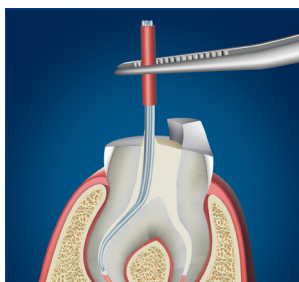
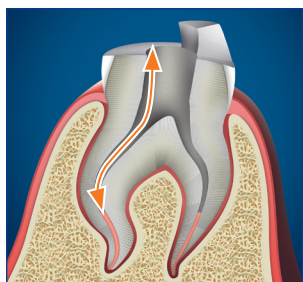
Rebilda® Post GT



Bundled glass fiber-reinforced resin post

Indications

Core build-up restorations with root posts for endodontically treated teeth



Advantages

- Innovative bundled fine posts enable easy placement within any root canal morphology
- Minimizes the need to mechanically prepare root canals preserving healthy tooth structure and saving valuable chair time
- Increases surface area within build-up restoration maximizing adhesion and retention values
- Optimal adaptation to all canal anatomies for better ease-of-use
- All materials in the set are perfectly coordinated to maximize the success of the restoration
- **Futurabond® U**
 - reliable self-curing
 - high bond strength without separate etching
- **Rebilda® DC**
 - Also suitable for post cementation
 - Cuts like dentin which minimizes ditching
 - Excellent physical properties enhances longevity
 - Low setting temperature

Presentation

Rebilda Post GT

REF 1973 5 x No. 4 (~ ø 0.8 mm)
 REF 1974 5 x No. 6 (~ ø 1.0 mm)
 REF 1975 5 x No. 9 (~ ø 1.2 mm)
 REF 1976 5 x No. 12 (~ ø 1.4 mm)

Rebilda Post GT - System

REF 1972 Kit 5 posts each of (~ ø 0.8 mm, ~ ø 1.0 mm, ~ ø 1.2 mm, ~ ø 1.4 mm), Ceramic Bond bottle 5 ml, Futurabond U SingleDose 20 pcs., Rebilda DC dentine QuickMix syringe 10 g, accessories



Tissue colored implant pick-up system with new Quick Up method

Indications

Self-cured composite luting material for attachments, such as ball, Locator® and telescopic anchors in full and partial dentures

Re-attachment of secondary elements such as bar retainers in composite based dentures

Advantages

- Faster with Quick Up method: Work without vent holes and excess material removal; Under fill with 2.5 mins. fast setting, self-cured material; finish with light-cured component
- Direct pick-up results in more accuracy compared to indirect method
- Complete system with checking and block out silicone – Fit Test C & B
- Low heat, self-curing material avoids tissue irritations
- Tasteless and odorless
- High bond strength to acrylic denture base
- Allows pick-up of any attachment



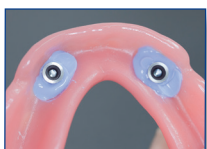
Implant with fitted attachments



Prosthetic base with the recesses for the attachments already created



Checking the accuracy of the fit with Fit Test C & B



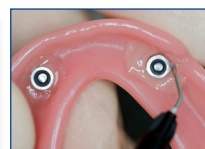
Checking of attachments for fitting accuracy with Fit Test C & B



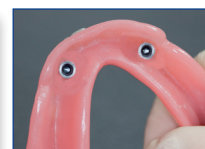
Blocking-out, covering of primary parts/gingiva with Fit Test C & B



Applying Quick Up from the QuickMix syringe



Applying Quick Up LC to correct deficits and superficial defects



Luted attachment in the prosthesis

Presentation

- REF 1625 Kit 7.5 g QuickMix syringe, 2 g syringe Quick Up LC, 4 ml Adhesive, 5 ml QuickMix syringe Fit Test C & B, accessories
- REF 1626 7.5 g Quick Up QuickMix syringe, type 10 mixing tips
- REF 1627 2 g syringe Quick Up LC, type 44 intraoral tips
- REF 1628 4ml Quick Up Adhesive
- REF 2189 mixing tips type 10 – 50 pack
- REF 2144 intraoral tips type 44 – 100 pack



Dual-curing, radiopaque, resin-based adhesive cement system

Indications

Adhesive cementation of:

Inlays and onlays

Crowns (full and partial)

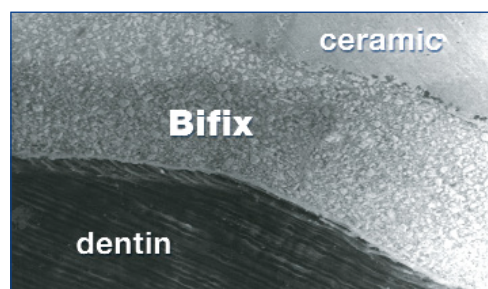
Veneers, facets

Pins and posts

Bridges and adhesive bridges (Maryland bridges)

Advantages

- Universal: for non-metal restorations (ceramic, also zirconium dioxide, and composite) as well as for metal restorations
- Dual-curing: light-curing permits determination of speed of work, and self-curing guarantees complete polymerization of the material
- Highest adhesion to dentin and enamel through the clinically proven dentin-enamel bond Futurabond DC. Excellent adhesion to metals is achieved by the special polyfunctional monomer structure of Bifix
- Durable cementation of ceramic pieces with Ceramic Bond



Excellent adhesion between Bifix and ceramic.

Presentation

REF 1217	kit 10 g syringe universal, Futurabond DC 4 ml liquid 1, 4 ml liquid 2, 5 ml Ceramic Bond, accessories
REF 1218	refill 10 g syringe universal
REF 1219	refill 10 g syringe transparent
REF 1759	refill 10 g syringe white-opaque
REF 1106	refill 5 ml Ceramic Bond
REF 1163	set Futurabond DC 4 ml liquid 1, 4 ml liquid 2
REF 2191	mixing tips type 11 – 50 pack
REF 2142	intraoral tips type 4 – 50 pack



Dual-curing, universal, self-adhesive resin cement

Indications

Cementation of:

Crowns

Bridges

Inlays and onlays

Endodontic posts made from ceramic, zirconium dioxide and metal

Advantages

- Ease of use. Gel-phase cleanup, no refrigeration, no hand mixing or trituration required
- High bond strength without an adhesive and high mechanical strength
- Low solubility for reliable cementation
- Compatibility with common materials. Ceramic and Zirconia incl. CAD/CAM materials, PFMs and metal restorations
- Efficient self-cure mode sets up completely without any light
- Low 10 µm film thickness cuts down on adjustment time
- Radiopaque for excellent identification under x-ray
- Endo-tips for easy root canal access in every pack

Presentation

REF 1784	Kit 3 × 5 g QuickMix syringes, shades U, T and WO, mixing tips type 14 and 15, type 1 intraoral tips
REF 1785	5 g QuickMix syringe, shade U (universal), mixing tips type 14 and 15, type 1 intraoral tips
REF 1786	5 g QuickMix syringe, shade T (transparent), mixing tips type 14 and 15, type 1 intraoral tips
REF 1787	5 g QuickMix syringe, shade WO (white-opaque), mixing tips type 14 and 15, type 1 intraoral tips
REF 2194	mixing tips type 14 – 50 pack
REF 2195	mixing tips type 15 – 50 pack
REF 2139	intraoral tips type 1 – 50 pack



Meron: **Glass Ionomer cement**

Indications

Luting of crowns, bridges, inlays, onlays, pins, posts and orthodontic bands

Advantages

- Very good flow properties for good wetting behavior
- Low film thickness (15–20 µm) that saves occlusal adjustment time
- High translucency for better esthetic results with ceramics
- Easy excess removal – saves time
- High fluoride release
- High bond strength

Meron AC:
Glass Ionomer Cement in Direct-activation Application Capsules
Application Cap
– less waste – better consistency – less mess

Presentation

Meron

REF 1086 powder 35 g, liquid 15 ml
REF 1090 Eco pack powder 15 g, liquid 7 ml

Meron AC

REF 1242 50 capsules
REF 2331 1 AC Applicator Type 1
REF 2334 1 AC Applicator Type 2



Meron Plus: **Resin reinforced Glass Ionomer cement**

Indications

Cementation of crowns, bridges, inlays and onlays made from ceramic, zirconium and metal

Advantages

- Extremely thin film thickness (< 17 µm)
- Prolonged soft-elastic setting phase offers more time for convenient removal of excess
- Low setting temperature
- Excellent biocompatibility
- Excellent chemical-physical properties due to the VOCO glass ionomer technology

Meron Plus AC:
Resin Reinforced Glass Ionomer Cement in Application Capsules
Application Cap
– less waste – better consistency – less mess

Presentation

Meron Plus

REF 1731 powder 15 g
REF 1732 liquid 10 ml

Meron Plus AC

REF 1736 50 application capsule
REF 1737 150 application capsule
REF 2331 1 AC Applicator Type 1
REF 2334 1 AC Applicator Type 2



A-silicone based permanent soft denture relining material in 1:1 cartridge system

Indications

- Permanent soft relining for total and partial dentures
- To relieve pressure from pressure spots
- To dam the palatal vibrating line
- In cases of flabby ridge and insufficient adhesion
- To cushion sharp-edged alveolar processes
- To support the healing process in implantology



Advantages

In-Office

- Complete chairside relining within minutes in one appointment
- Extremely high adhesion between denture and relining material with a special adhesive
- Biocompatible, tasteless and odorless
- Esthetic stable color, shade adaptation effect

Lab

- Fewer working steps than conventional cold-curing products
- Only 1 minute processing of adhesive and short time period in the pressure unit
- Relining can be repaired immediately after setting and up to 14 days after initial relining

Presentation

- REF 2041 kit 50 ml cartridge Ufi Gel SC, 10 ml adhesive, each 10 ml glazing base/catalyst, 10 mixing tips type 8, accessories
- REF 2040 refill 50 ml cartridge, 10 mixing tips type 8
- REF 2029 refill 10 ml Ufi Gel SC adhesive
- REF 2047 refill each 10 ml glazing base/catalyst
- REF 2187 mixing tips type 8 – 50 pack

Trimming disk:

- REF 2049 trimming discs – 10 pack

Ufi Gel® hard C



Direct hard denture relining material in a 1:1 cartridge based on composite technology

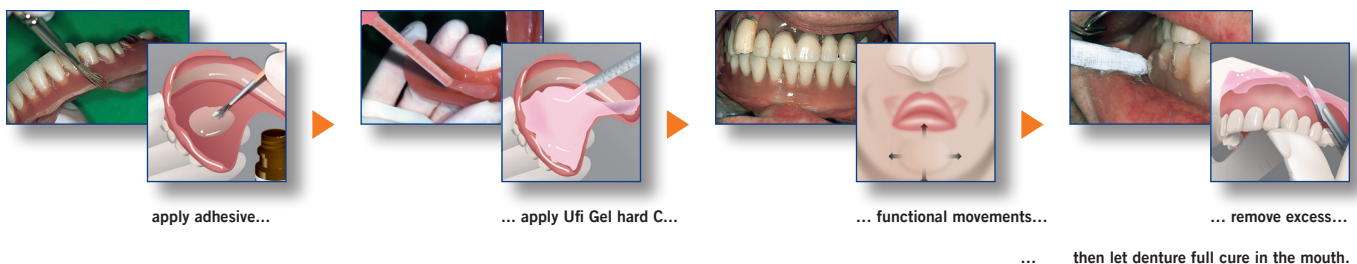
Indications

Hard, permanent chairside relining
 Direct and indirect relining
 Total or partial relining
 External relinings (extended care living facility, homes for the disabled, hospitals)
 Extensions of denture margins
 Repairs and enlargements
 Adaptation layer by layer over years

Advantages

- Complete chairside hard relining in 10–15 minutes
- MMA-free
- Biocompatible with a neutral taste and smell
- Low exothermic temperature (98.6° F)
- Bubble-free automix application ensures a smooth surface
- Esthetic and color stable
- Achieves the same hardness, finishing and cleaning as laboratory-processed relines
- Easy and time saving working steps

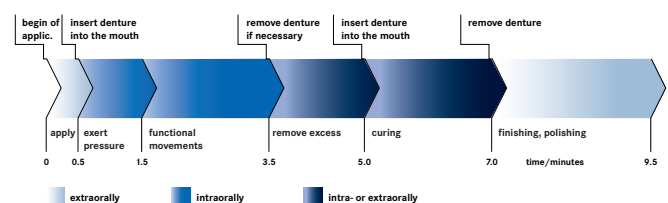
... as simple as an impression



Presentation

- REF 2215 kit cartridge 80 g, adhesive 10 ml, mixing tips type 8
 REF 2218 Intro kit cartridge 80 g, dispenser type 2, adhesive 10 ml, mixing tips type 8
 REF 2216 refill cartridge 80 g, mixing tips type 8
 REF 2187 mixing tips type 8 – 50 pack
 REF 2217 adhesive - 10 ml bottle

hard chairside relining in only 10 minutes ...



Fit Test® C & B



Control silicone to check the fit of prosthetic pieces

Indications

For the precise control and fit of marginal gaps and adaptation of:

- crowns (full and partial)
- bridges
- inlays/onlays
- cast metal cores, crowns
- metal denture bases
- attachments and other secondary parts of dentures

Time required [Fit Test C & B]



Time required [Competitor A]

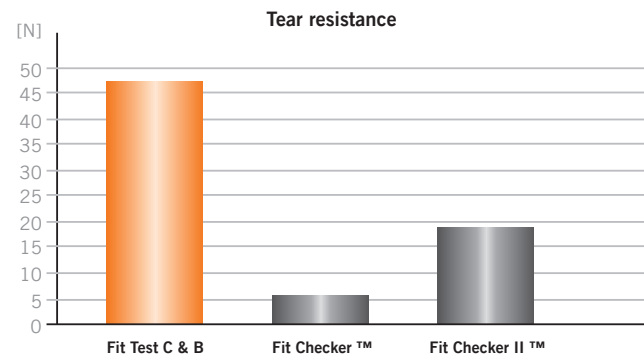


Conventional wash material [Competitor B]



Advantages

- Fast diagnostic aid/tool for all restorative applications
- QuickMix syringe for easy and precise application
- Optimal blue color for metal and ceramic restorations
- Fast results due to short 45 secs. setting time
- Extremely tear resistant for complete and easy one-piece removal



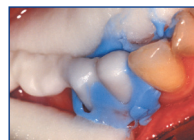
Source: VOCO GmbH in-house test analogue ASTN D-624-98
VOCO is not the holder of the mentioned trade marks



Situation after preparation



Direct application of Fit Test C & B



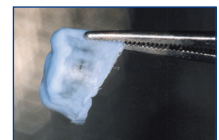
Seating and intraoral setting



Removal of the restoration



Non optimal fit is visualized in the restoration ...



... and after removal of Fit Test C & B.

Presentation

REF 2095 QuickMix syringe 5 ml, mixing tips type 9
REF 2188 mixing tips type 9 – 50 pack

Technical Data

Working time	max. 1 min 45 secs.
Setting time	45 secs. – 1 min 15 secs.
Tear resistance	48.5 N

SolFlex 650



SolFlex 350



3D printer – Digital, additive dentistry

Advantages

- Suitable for printing of models, splints and other orthodontic pieces with V-Print model and V-Print ortho
- Suitable for processing various, high-quality light-cured 3D printing materials
- Use of STL format
- High vat volume allows production over night
- DLP-Technology with a long-lasting 385 nm UV-LED light source
- Maximized building speed with high process reliability due to SMP technology
- Patented Flex-Vat technology – increasing printing speed while minimizing support structures, saving time and material

SolFlex 650

- Base area: 400 × 400 mm
- Build area: 128 × 120 mm (6 exposure areas)
- Max. build height: 130 mm
- Layer thickness: 25 - 200 µm
- Building capacity: up to 24 splints
- Building speed: up to 138 mm/h, depending on the material's layer thickness
- Pixel size: 50 µm
- Precision: ±25 µm

Presentation

REF 9104	SolFlex 650 3D printer
REF 9105	SolFlex 650 SMP - 3D printer (including sensor technology)
REF 9112	Flex-Vat – Flexible material reservoir
REF 9115	Handle bar 350/650 – Handle bar Flex-Vat
REF 9122	Platform – Building platform
REF 9130	Polymerization Unit (G171)

Technical overview

An increasing number of dentists and dental technicians already rely on the digitalization of their workflow. By integrating 3D printing technology, the in-lab manufacturing can be accelerated, quality and precision improved and costs minimized.

The SolFlex 3D printers give you an easy access to additive manufacturing technology. With 3D printing technology, you benefit from the efficiency advantages of digital designs throughout the production stage. By combining scans with subsequent design and final 3D printing, the manufacturing of models and splints for orthodontic dentistry can be achieved quickly and accurately.

SolFlex 350

- Base area: 400 × 400 mm
- Build area: 64 × 120 mm (3 exposure areas)
- Max. build height: 130 mm
- Layer thickness: 25 - 200 µm
- Building capacity: up to 12 splints
- Building speed: up to 138 mm/h, depending on the material's layer thickness
- Pixel size: 50 µm
- Precision: ±25 µm

Presentation

REF 9102	SolFlex 350 3D printer
REF 9103	SolFlex 350 SMP - 3D printer (including sensor technology)
REF 9111	Flex-Vat – Flexible material reservoir
REF 9115	Handle bar 350 / 650 – Handle bar Flex-Vat
REF 9121	Platform – Building platform
REF 9130	Polymerization Unit (G171)

SolFlex 170



3D printer – Digital, additive dentistry

Advantages

- Suitable for printing of models, splints and other orthodontic pieces with V-Print model and V-Print ortho
- Suitable for processing various, high-quality light-cured 3D printing materials
- Use of STL format
- High vat volume allows production over night
- DLP-Technology with a long-lasting 385 nm UV-LED light source
- Maximized building speed with high process reliability due to SMP technology
- Patented Flex-Vat technology – increasing printing speed while minimizing support structures, saving time and material

Technical overview

An increasing number of dentists and dental technicians already rely on the digitalization of their workflow. By integrating 3D printing technology, the in-lab manufacturing can be accelerated, quality and precision improved and costs minimized.

The SolFlex 3D printers give you an easy access to additive manufacturing technology. With 3D printing technology, you benefit from the efficiency advantages of digital designs throughout the production stage. By combining scans with subsequent design and final 3D printing, the manufacturing of models and splints for orthodontic dentistry can be achieved quickly and accurately.

SolFlex 170

- Base area: 296 × 318 mm
- Building platform: 56 × 89 mm (1 exposure area)
- Max. Height: 120 mm
- Layer thickness: 25 - 200 µm
- Construction capacity: up to 6 splints
- Construction speed: up to 138 mm / h, depending on thickness and material
- Pixel size: 70 µm
- Accuracy: ±35 µm

Presentation

REF 9100	SolFlex 170 3D printer
REF 9101	SolFlex 170 SMP - 3D printer (including sensor technology)
REF 9110	Flex-Vat – flexible material reservoir
REF 9120	Platform – Building platform
REF 9130	Polymerization Unit (G171)

V-Print model



V-Print ortho



Material for 3D printing of models

Indications

3D print working and presentation models for the entire spectrum of models in dentistry for DLP-Printers with a UV LED spectrum of 378 to 388 nm.

Advantages

- Opaque color for good optical recognition of surface structure, preparation limits, etc.
- Good flexural strength and surface hardness
- Excellent precision

Material for 3D printing of ortho devices

Indications

Orthodontic base parts, splints and templates Medical device, Class IIa for DLP-Printers with a UV LED spectrum of 378 to 388 nm.

Advantages

- Highly esthetic due to the clear color
- High color stability and break resistance
- Biocompatible
- Flavor neutral

Presentation

REF 6041 V-Print model – bottle 1,000 g (grey)

Presentation

REF 6040 V-Print ortho – bottle 1,000 g (clear)

Traypurol tabs



Active-tabs for cleaning impression trays and instruments

Advantages

- Quickly removes alginates and cements
- Completely dissolves in water without scrubbing
- Dosing is simple
- 2 tabs per quart of cleaning solution
- Bio-degradable, pH-neutral
- Gentle to material, safe for all rust-proof metals (including aluminium) and plastics
- Solution is effective for up to 72 hours



Presentation

REF 2355 pack 50 tabs

Individuo Lux



Light-curing custom tray material in two contoured forms for maxillae or mandibles

Advantages

- Very stable and non-sticky trays
- Peppermint flavor and pleasant smell
- Short curing time under halogen light devices or UVA-light
- Available in blue or transparent shade

Profibase



Light-curing pink-transparent base plates for easy and economic production of wax models

Advantages

- Stable and pressure-proof
- Tissue-like shade increases acceptance by dentists and patients
- Peppermint flavor and pleasant smell
- Short curing time under halogen light devices or UVA-light

Presentation

blue opaque
REF 2402 pack 50 maxillae
REF 2403 pack 50 mandibles
blue transparent
REF 2408 pack 50 maxillae
REF 2409 pack 50 mandibles

Presentation

REF 2111 set 25 maxillae, 25 mandibles
REF 2112 pack 50 maxillae
REF 2113 pack 50 mandibles

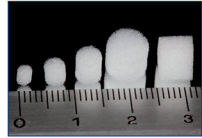
Micro Tim



Fine application brushes for Admira Bond/Protect and other varnishes

Pele Tim

Pele Tim:
Available shapes
and sizes



Special foam pellets for applying medical products in liquid or paste form without exerting any pressure. Suitable for painting infected alveoli and use as an endodrain

Dispenser



Presentation

- REF 2249 pack 100 Micro Tim
REF 2338 brush holder for disposable dental brushes and Micro Tim, 5 pieces

Presentation

- REF 2250 No. 0, mini, ø 3 mm, approx. 3,000 pellets
REF 2252 No. 1, small, ø 4 mm, approx. 3,000 pellets
REF 2253 No. 2, medium, ø 5 mm, approx. 1,000 pellets
REF 2254 No. 3, large, ø 8 mm, approx. 500 pellets
REF 2255 No. 4, V-shaped, 6 x 8 mm, approx. 500 pellets

Presentation

- REF 2158 type 2 for Structur 3, Structur Premium, Structur 2 SC, Provicol C, Ufi Gel SC, Registrado X-tra (1:1/2:1)
REF 2259 type 3 for Rebuilda DC (DS25 1:1)

AC Applicator



Type 2

Forceps-type applicator to directly apply the content of VOCO application capsules (AC) into the cavity

Ergonomically designed applicator to dispense the content of the VOCO application capsules (AC) directly into the cavity

Presentation

- REF 2331 1 AC Applicator Type 1
REF 2334 1 AC Applicator Type 2

AC Activator



Device to activate VOCO application capsules (AC)

Presentation

- REF 9300 1 AC Activator

Caps Dispenser



Low force composite dispenser


Presentation

- REF 9301 1 Caps Dispenser for Grandio Caps, GrandioSO Caps, GrandioSO Heavy Flow Caps, GrandioSO Flow Caps, x-tra fil Caps, x-tra base Caps, Admira Fusion Caps, Admira Fusion x-tra caps, Admira Caps, Clip Caps, Twinky Star etc.

Mixing Tips

		
REF 2185 mixing tips type 6 for Structur 3, Structur Premium, Structur 2 SC, Provicol C – 50 pack	REF 2186 mixing tip type 7 for V-Posil Light Fast and X-Light Fast - 50 pack	REF 2189 mixing tips type 10 for Provicol QM, Structur 3 (in the QuickMix syringe), Structur 2 (in the QuickMix syringe), Provicol QM Plus, Quick Up – 50 pack
		
REF 2191 mixing tips type 11 for Rebilda DC QM syringes, Bifix QM, Fit Test C&B with Quick Up method, Grandio® Core Dual Cure – 50 pack	REF 2192 mixing tips type 12 for Rebilda DC in cartridge – 50 pack	REF 2194 mixing tips type 14 for Bifix SE – 50 pack
		
REF 2195 mixing tips type 15 with intraoral tips type 1 for Bifix SE – 50 pack	REF 2196 mixing tips type 16 for V-Posil Heavy Soft Fast, V-Posil Mono Fast, and Registrado X-tra for intraoral tips type 2 – 50 pack OR type 3 - 50pk	REF 2199 mixing tip type 19 for Rebilda DC - 30 pack
		
REF 2202 mixing tips type 20 (Die Silicone) – 50 pack	REF 2187 mixing tips type 8 for Ufi Gel SC, Ufi Gel hard C – 50 pack	REF 2188 mixing tips type 9 for Fit Test C & B, Bifix Temp – 50 pack
		
REF 2203 mixing tip type 30 for V-Posil Heavy Soft Fast and Mono Fast 380ml Cartridge - 50 pack		

Intraoral Tips

		
REF 2146 pack type 41 for Ionoseal, Grandio/SO Flow, Admira Fusion Flow, Calciol LC, etc. – 100 pieces	REF 2147 pack type 45 for Amaris Gingiva, Grandio Seal – 100 pack	REF 2148 pack type 46 for GrandioSO Heavy Flow, x-tra base, Admira Fusion x-base, Clip Flow – 100 pack
		
REF 2144 pack type 44 for Amaris Flow, Admira Flow, Quick Up LC – 100 pack	REF 2131 pack type 47 for Calcicur – 30 pack	REF 2139 pack type 1 for Rebilda DC QM syr., Bifix SE, Bifix QM, Fit Test C & B, direct root canal application – 50 pack
		
REF 2140 pack type 2 for Registrado X-tra – 50 pack	REF 2141 pack type 3 for Rebilda DC in cartridge, V-Posil Light Fast and X-Light Fast - 50 pack	REF 2142 pack type 4 for Rebilda DC QM syringes, Bifix QM, Grandio Core Dual Cure – 50 pack
		
REF 2132 pack type 48 for Vococid – 50 pack	REF 2133 pack type 6 for V-Posil Mono Fast - 50 pack	

Trifill



REF 2169 Three composite placement instruments in one – 10 pack

Endo Tim



REF 2246 Brushes for applying bonding agents and varnishes into the root canal – pack 50 Endo Tim to be used in the root canal – 50 pack

Single Tim



REF 2247 Application brushes
for Futurabond NR/DC/M/M+/U
SingleDose – 100 pack

Easy Brush



REF 2245 application brushes
for Profluorid L, Profluorid Varnish
and Easy Glaze – 50 pack

Micro Tim



REF 2249 Application brushes
for Admira Protect – 100 pack

Brush Holder



REF 2338 Disposable brush holder
for Micro Tim for Admira Protect
– 5 pack

Polishing Discs



REF 2049 trimming discs – 10 pack
for Ufi Gel SC
without mandrel

Notes

This image shows a single sheet of white paper with horizontal blue ruling lines. The lines are evenly spaced and run across the width of the page. There are no margins, text, or other markings on the paper.

Free CE Webinars live and on-demand at:

www.vocolearning.com



VOCO America Inc.
1245 Rosemont Drive
Suite 140
Indian Land · SC 29707

www.vocoamerica.com
infousa@voco.com

Toll-free phone: 1-888-658-2584
Fax: 1-888-849-3989



VOCO
THE DENTALISTS